



## Permanent Mount Multi-Band Omnidirectional Antenna

This antenna provides multi-band omnidirectional coverage for fixed or mobile applications operating in AMPS, PCS and Wi-Fi frequencies. Featuring a durable, very low profile radome and integral stud mount base for through hole installations, this antenna is ideal for vending machine, meter reading and other telemetry data tracking applications requiring a discrete antenna solution.

### Features:

- Low profile design for minimal exposure to theft or vandalism
- Through hole mounting with jam nut prevents removal of antenna
- Rubber gasket for water ingress prevention allows use in and out of doors
- Durable UV stable plastic for long lasting indoor or outdoor installations
- High gain performance and high efficiency cable supports highly efficient radio systems



### Technical Data

<b>General Specifications:</b> Bottom fed multi-band antenna for use on metallic ground planes
<b>Maximum Power:</b> 10 watts
<b>VSWR:</b> < 2:1 (Wi-Fi) < 2:1 (AMPS, PCS)
<b>Nominal Impedance:</b> 50 ohms
<b>Polarization:</b> Linear, vertical
<b>Radome Material:</b> UV stable plastic
<b>Cable:</b> Two 3 ft Pro-Flex Plus 195
<b>Connector*:</b> Male SMA (AMPS/PCS) Reverse Polarity SMA (WiFi)
<b>Mount Method:</b> Through hole 15/16-inch dia (0.94) 7/8-14-inch UNF plastic Hex-nut

\*Standard. Please contact factory about other connector options.

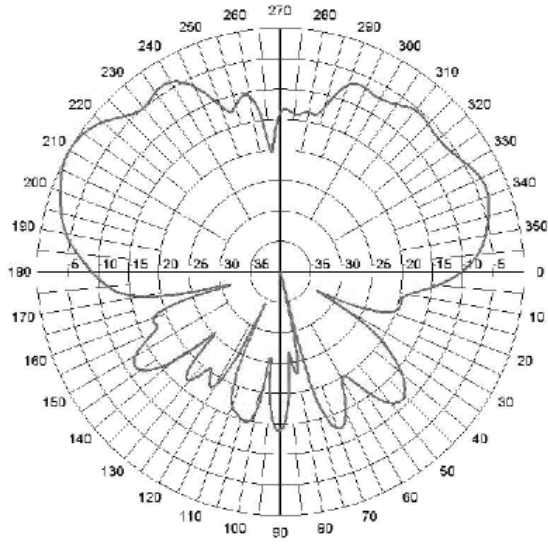
### Antenna Electrical Specifications

Model	Frequency Range	Horizontal Beamwidth	Vertical Beamwidth	Peak Gain
PCTMBPTSM/RPSM	824-896 MHz,	360°	40°	2 dBi
	1850-1990 MHz,	360°	25°	3 dBi
	2400-2485 MHz	360°	24°	3 dBi

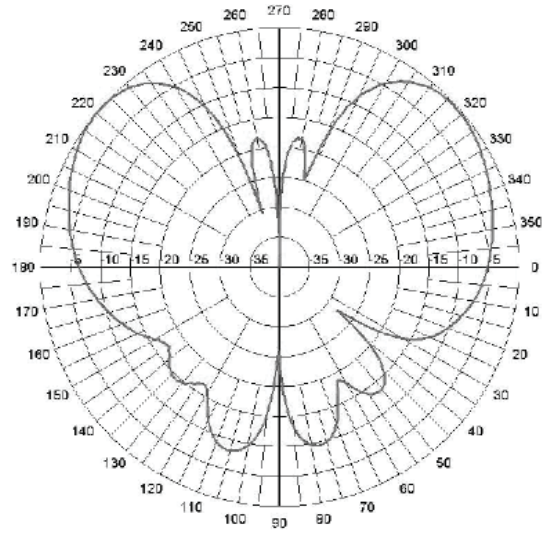
### Mechanical Specifications

Model	Dimensions	Weight (Mass)
PCTMBPTSM/RPSM	4.4" x 1.5" (11.18 x 4.06 cm)	0.40 lb (0.18 kg)

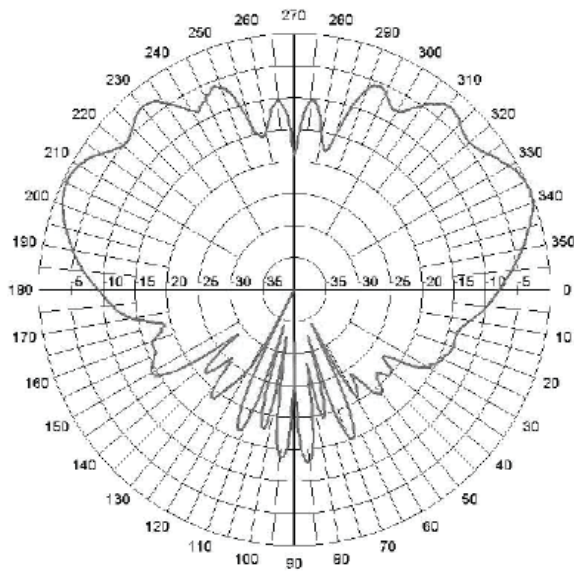
PCTMBPTSM/RPSM Radiation Patterns



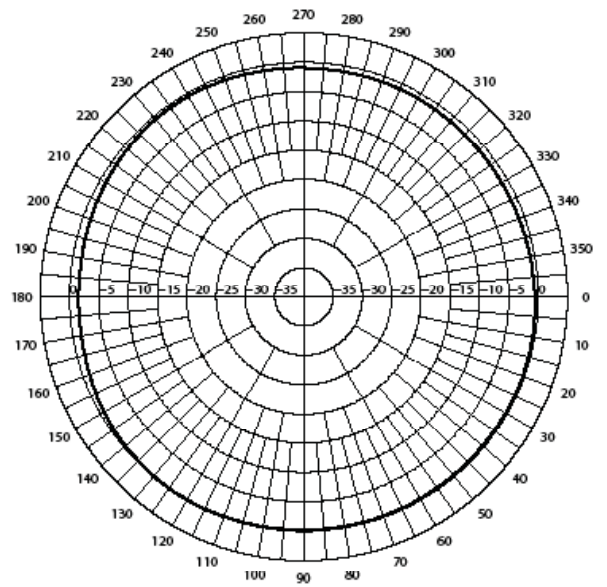
PCS Elevation Cut



AMPS Elevation Cut



ISM Elevation Cut



Azimuth Plane Radiation Pattern