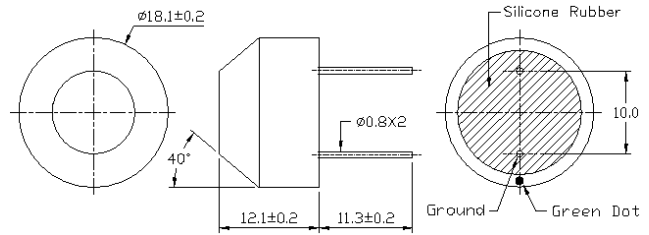


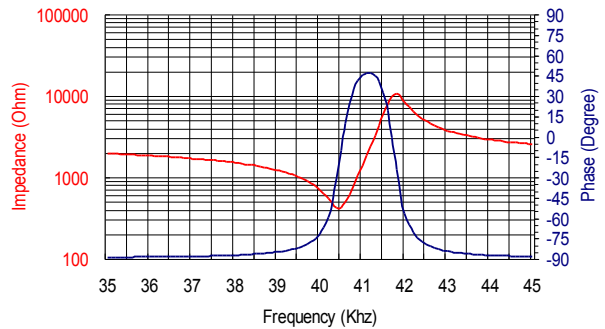


**Dimensions:** dimensions are in mm



**Impedance/Phase Angle vs. Frequency**

Tested under 1Vrms Oscillation Level

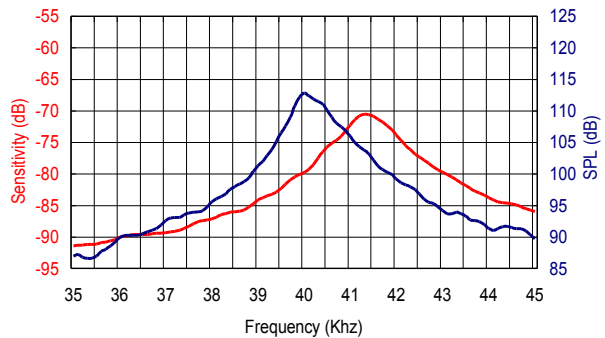


**Specification**

400EP18A	Transceiver
Center Frequency	40.0±1.0KHz
Bandwidth (-6dB) 400EP18A	2.0KHz
Transmitting Sound Pressure Level at resonant frequency; 0dB re 0.0002μbar per 10Vrms at 30cm	108dB min.
Receiving Sensitivity at resonant frequency 0dB = 1 volt/μbar	-75dB min.
Nominal Impedance (Ohm)	750
Ringing (ms)	1.2 max.
Capacitance at 1KHz ±20%	2600 pF
Temperature Compensated Type	5200 pF
Max. Driving Voltage (Cont.)	20Vrms
20 bursts, 25ms repetition rate	100Vpp
Total Beam Angle -6dB	85°
Operation Temperature	-30 to 70°C
Storage Temperature	-40 to 80°C

**Sensitivity/Sound Pressure Level**

Tested under 10Vrms @30cm

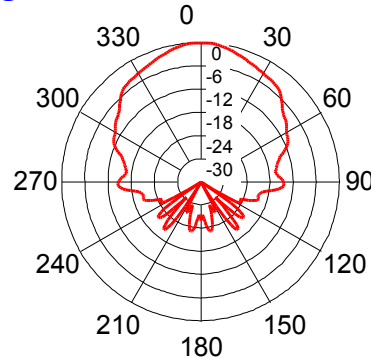


All specification taken typical at 25°C  
Both lead pins and lead wires output are available.  
Temperature compensated type is available upon request.

Models available:

1	400EP18A	Black Al. Housing
2	400EP18A0	Natural Al. Housing
3	400EP18AC	Temp. Compensated

**Beam Angle:** Tested at 40.0KHz frequency



**S. Square Enterprise Company Limited**  
**Pro-Wave Electronics Corporation**

[Http://www.pro-wave.com.tw](http://www.pro-wave.com.tw) ; E-mail: [sales@pro-wave.com.tw](mailto:sales@pro-wave.com.tw) ; Tel: 886-2-22465101 ; Fax: 886-2-22465105