



A Tallysman Accutenna® TW3400P Dual Feed GPS L1 / GLONASS G1 Passive Antenna

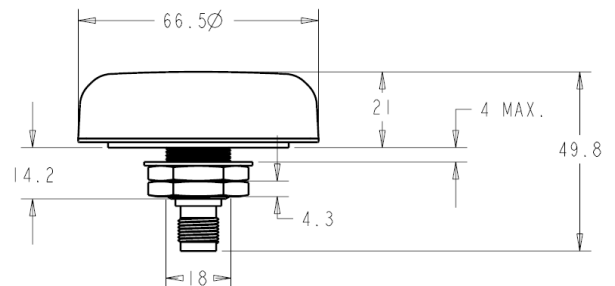
The TW3400P employs Tallysman's unique Accutenna® technology covering the GPS L1 / GLONASS G1 frequency band. It provides truly circular response over its entire bandwidth.

The TW3400P features a dual-feed wideband patch element and a mid section SAW to filter the combined signal. This configuration provides excellent axial ratio that is constant across the full frequency band.

The antenna is housed in a through-hole mount, weather-proof enclosure for permanent installations. L Bracket or Pipe Mount adapters (part numbers 23-0040-0, 23-0065-0 respectively) are available for non-rooftop installation. A 100mm ground plane is recommended for non-roof-top installations.



Dimensions (mm)



Features

- **dual-feed, wide band** patch
- Axial ratio, <1 dB over full bandwidth
- High gain 4.25 dBic
- Robust design
- Small form factor
- -40°C to +85 °C Operation

Benefits

- Better axial ratio at lower elevation angles
- Compact form factor
- RoHS compliant



TW3400P Dual Feed GPS L1 / GLONASS G1 Band Passive Antenna Specifications Over full bandwidth, T=25°C

Antenna

Architecture	Dual, quadrature feeds
Antenna Gain (100mm ground plane)	4.25dBic
Axial Ratio (over full bandwidth)	<1dB @zenith <3dB max
1dB Bandwidth	30MHz

Electrical

Architecture	Dual Feed Patch -> Hybrid 90° Combiner
Polarization	RHCP
VSWR (at antenna PCB)	<1.5:1
Return Loss Bandwidth (-10 dB)	>20MHz

Mechanicals & Environmental

Mechanical Size	66.5 mm dia. x 21 mm H
Enclosure	Radome: ASA Plastic, Base: Zamak white metal
Operating Temp. Range	-40°C to +85°C
Weight	150g
Attachment Method	Permanent ¾" (19mm) through hole mount
Environmental	RoHS compliant, IP67
Salt Spray	MIL-STD-810F Section 509.4
Shock	Vertical axis: 50G, other axes: 30G
Vibration	3 axis, sweep = 15 min, 10 to 200Hz sweep: 3G
Warranty	One year – parts and labour

Ordering Information

TW3400P – Dual Feed GPS L1 / GLONASS G1 Passive antenna 33-3400P-xx-yy
Where xx = connector type and yy = radome colour and shape

Please refer to the Ordering Guide [<http://www.tallysman.com/wp-content/uploads/Current-Ordering-Guide.pdf>] for the current and complete list of available connectors.

Tallysman Wireless Inc

106 Schneider Road, Unit 3
Ottawa ON K2K 1Y2 Canada
Tel 613 591 3131 Fax 613 591 3121
sales@tallysman.com

The information provided herein is intended as a guide only and is subject to change without notice. This document is not to be regarded as a guarantee of performance. Tallysman Wireless Inc. hereby disclaims any or all warranties and liabilities of any kind. © 2016 Tallysman Wireless Inc. All rights reserved. Rev 0.9