



4D SYSTEMS
TURNING TECHNOLOGY INTO ART

microLCD Display Module Series

DATASHEET

DOCUMENT DATE: 04th March 2019

DOCUMENT REVISION: 1.6



uLCD-43D (Non-touch)

uLCD-43DT (Resistive touch)

uLCD-43DCT (Capacitive touch)

Uncontrolled Copy when printed or downloaded.
Please refer to the 4D Systems website for the latest
Revision of this document

Table of Contents

| | |
|--|-----------|
| 1. Description | 4 |
| 2. Features..... | 4 |
| 3. Hardware Overview | 5 |
| 4. Hardware Interface - Pins | 7 |
| 4.1. Serial Ports – TTL Level Serial | 7 |
| 4.2. General Purpose I/O..... | 8 |
| 4.3. System Pins..... | 9 |
| 4.4. Alternate Pin Function Overview | 9 |
| 4.5. SPI | 10 |
| 4.6. I ² C | 11 |
| 4.7. Pulse Out | 11 |
| 4.8. PWM Out..... | 11 |
| 4.9. Pin Counter..... | 12 |
| 4.10. Quadrature In | 12 |
| 4.11. Analog Inputs..... | 12 |
| 5. PmmC/Firmware Programming..... | 13 |
| 6. Module Features..... | 14 |
| 6.1. Display – 4.3” TFT Touch Screen | 14 |
| 6.2. DIABLO16 Processor..... | 14 |
| 6.3. Audio | 14 |
| 6.4. SD/SDHC Memory Cards | 15 |
| 6.5. Fat16..... | 15 |
| 7. Display Precautions..... | 15 |
| 8. Hardware Tools..... | 16 |
| 8.1. Programming Cable/Adaptor | 16 |
| 9. 4DGL - Software Language..... | 16 |
| 10. 4D Systems - Workshop4 IDE..... | 17 |
| 10.1. Designer Environment..... | 17 |
| 10.2. ViSi Environment | 17 |
| 10.3. ViSi Genie Environement..... | 18 |

10.4. Serial Environment 18

11. Starter Kit 19

12. Mechanical Details 20

13. Schematic Diagram 21

14. Specifications and Ratings 22

15. Hardware Revision History 23

16. Datasheet Revision History..... 23

17. Legal Notice 24

18. Contact Information 24

1. Description

The uLCD-43D/DT/DCT is an upgrade to the favourite uLCD-43P/PT/PCT range of 4.3" Intelligent Display Modules, now powered by the 4D Systems' DIABLO16 Graphics Processor.

The uLCD-43D/DT/DCT intelligent display modules are designed for applications demanding a good sized intelligent display module, and where performance is important, along with a good amount of Flash and RAM.

Driving the display and peripherals is the DIABLO16 processor, a very capable and powerful chip which enables stand-alone functionality, programmed using the 4D Systems Workshop 4 IDE Software. The Workshop IDE enables graphic solutions to be constructed rapidly and with ease due to its design being solely for 4D's graphics processors.

The DIABLO16 Processor offers considerable FLASH and RAM upgrades over the PICASO processor, and also provides mappable functions such as I2C, SPI, Serial, PWM, Pulse Out, and Quadrature Input, to various GPIO, and also provide up to 4 Analog Input channels.

The display module has an array of features including PWM for Sound, Touch Detection, micro-SD memory storage, general purpose I/O including Analog Inputs, multiple TTL Serial, I2C and SPI channels and multiple millisecond resolution timers, amongst many more features.

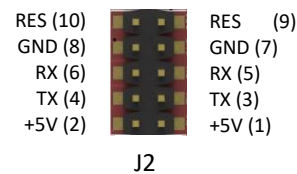
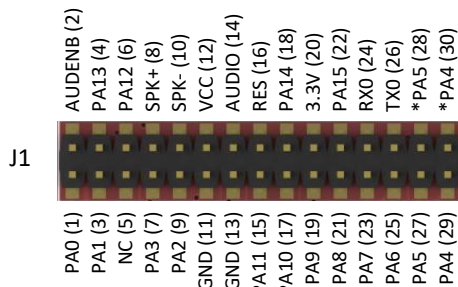
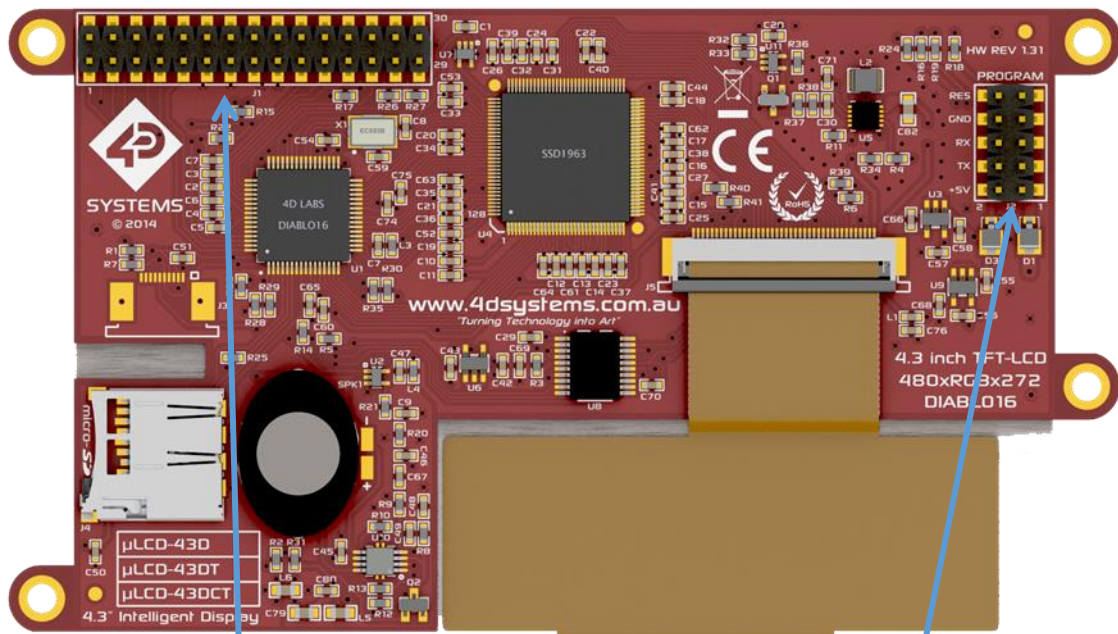
Anything that has been designed in the past to run on a PICASO Processor or uLCD-43P/PT/PCT intelligent display can theoretically run on this DIABLO16 Module with minor changes. Please ensure you contact the 4D Systems' support team if unsure if upgrading from a PICASO product and wanting to design with or change over to this uLCD-43D/DT/DCT Module.

A table is included in this datasheet to outline the main differences between the uLCD-43P versions and the uLCD-43D version.

2. Features

- Powerful 4.3" Intelligent LCD-TFT display module powered by DIABLO16.
- 480x320 HVGA Resolution, RGB 65K true to life colours, TFT Screen with integrated 4-wire Non-touch, Resistive and Capacitive Touch Panel.
- Easy 5 pin interface to any TTL Serial Host:
- VCC, TX, RX, GND, RESET
- 6 banks of 32750 bytes of Flash memory for User Application Code and Data.
- 32Kb of SRAM purely for the User.
- 16 General Purpose I/O pins for user interfacing, which include 4 configurable Analog Inputs.
- The GPIO is variously configurable for alternative functions such as:
 - 3x I²C channels available.
 - 1x SPI dedicated for SD Card and 3x configurable SPI channels available.
 - 1x dedicated and 3x configurable TTL Serial comm ports available.
 - Up to 6 GPIO can be used as Pin Counters.
 - Up to 6 GPIO for PWM (simple and Servo).
 - Up to 10 GPIO for Pulse Output.
 - Up to 14 GPIO can be configured for Quadrature Encoder Inputs (2 channels).
- On-board micro-SD memory card connector for multimedia storage and data logging purposes.
- Display full colour images, animations, icons and video clips on chosen 4D Systems display.
- Supports all available Windows fonts.
- 4.0V to 5.5V range operation (single supply).
- Module dimensions: 119.5 x 67.0 x 15.2mm (including tabs) – See drawing, Weighing ~80 g.
- Display Viewing Area: 95.04 x 53.85mm
- 4x mounting tabs with 3.0mm holes for mechanical mounting.
- RoHS and CE Compliant..

3. Hardware Overview



J2 Pinout (Programming Header)

| Pin | Symbol | I/O | Description |
|-------|--------|-----|--|
| 1, 2 | +5V | P | Main Voltage Supply +ve input pin. Reverse polarity protected. Range is 4.5V to 5.5V, nominal 5.0V. |
| 3, 4 | TX | O | Asynchronous Serial Transmit pin, TTL level. Connect this pin to the Receive (Rx) signal of other serial devices. Used in conjunction with the RX pin for programming this microLCD. This pin is tolerant up to 5.0V levels. |
| 5, 6 | RX | I | Asynchronous Serial Receive pin, TTL level. Connect this pin to the Transmit (Tx) signal of other serial devices. Used in conjunction with the TX pin for programming this microLCD. This pin is tolerant up to 5.0V levels. |
| 7, 8 | GND | P | Supply Ground |
| 9, 10 | RES | I | Master Reset signal. Internally pulled up to 3.3V via a 10K resistor. An active Low pulse greater than 2 micro-seconds will reset the module. If the module needs to be reset externally, only use open collector type circuits. This pin is not driven low by any internal conditions. The host should control this pin via one of its port pins using an open collector/drain arrangement. |

I = Input, O = Output, P = Power

| J1 Pinout (Programming Header) | | | |
|--------------------------------|-----------|-------|---|
| Pin | Symbol | I/O | Description |
| 1 | PA0 | I/O/A | General Purpose I/O pin with Analog Capability. This pin is 3.3V tolerant when used as a Digital, with a range of 0-3.3V when used as an Analog Input |
| 2 | AUDENB | O | Audio Amplifier Enable, to enable external amplifier |
| 3 | PA1 | I/O/A | General Purpose I/O pin with Analog Capability. This pin is 3.3V tolerant when used as a Digital, with a range of 0-3.3V when used as an Analog Input |
| 4 | PA13 | I/O | General Purpose Input/Output, 3.3V Level - 5V Tolerant. Used for I2C for Resistive and Capacitive Touch on the uLCD-43DT and uLCD-43DCT models. Please refer to Section 4.2 under heading PA12-PA13 for more information. |
| 5 | NC | - | Not connected |
| 6 | PA12 | I/O | General Purpose Input/Output, 3.3V Level - 5V Tolerant. Used for I2C for Resistive and Capacitive Touch on the uLCD-43DT and uLCD-43DCT models. Please refer to Section 4.2 under heading PA12-PA13 for more information. |
| 7 | PA3 | I/O/A | General Purpose I/O pin with Analog Capability. This pin is 3.3V tolerant when used as a Digital, with a range of 0-3.3V when used as an Analog Input, also used for Bus Read |
| 8 | SPK+ | O | Speaker Output + Can connect to external speaker (disconnect on-board) |
| 9 | PA2 | I/O/A | General Purpose I/O pin with Analog Capability. This pin is 3.3V tolerant when used as a Digital, with a range of 0-3.3V when used as an Analog Input, also used for Bus Write |
| 10 | SPK- | O | Speaker Output - Can connect to external speaker (disconnect on-board) |
| 11 | GND | P | Supply Ground |
| 12 | +5V | P | Supply Input +ve, 4.0V to 5.5V, 5.0V Nominal |
| 13 | GND | P | Supply Ground |
| 14 | AUDIO_OUT | O | Audio Output, to feed into external amplifier |
| 15 | PA11 | I/O | General Purpose Input/Output, 3.3V Level - 5V Tolerant |
| 16 | RES | I | Master Reset, Active Low (GND) (Refer J2 Pinout) |
| 17 | PA10 | I/O | General Purpose Input/Output, 3.3V Level - 5V Tolerant |
| 18 | PA14 | I/O | General Purpose Input/Output, 3.3V Level - only 3.3V Tolerant |
| 19 | PA9 | I/O | General Purpose Input/Output, 3.3V Level - 5V Tolerant |
| 20 | 3.3V | I | Regulated 3.3 Volts output, maximum available current 250mA (HW REV 2.0, previously 150mA) to power external circuitry. |
| 21 | PA8 | I/O | General Purpose Input/Output, 3.3V Level - 5V Tolerant |
| 22 | PA15 | I/O | General Purpose Input/Output, 3.3V Level - only 3.3V Tolerant |
| 23 | PA7 | I/O | General Purpose Input/Output, 3.3V Level - 5V Tolerant |
| 24 | RX0 | I | Asynchronous serial port 0 receive pin. COM0 (same as the RX pin on the J2 Programming Header). 3.3V Level - 5V Tolerant |
| 25 | PA6 | I/O | General Purpose Input/Output, 3.3V Level - 5V Tolerant |
| 26 | TX0 | O | Asynchronous serial port 0 transmit pin. COM0 (same as the TX pin on the J2 Programming Header). 3.3V Level Output. |
| 27 | PA5 | I/O | General Purpose Input/Output, 3.3V Level - 5V Tolerant |
| 28 | - | - | Connected to PA5, to allow this pin to be used as Serial TX1 like uLCD-43P |
| 29 | PA4 | I/O | General Purpose Input/Output, 3.3V Level - 5V Tolerant |
| 30 | - | - | Connected to PA4, to allow this pin to be used as Serial RX1 like uLCD-43P |

I = Input, O = Output, P = Power, A = Analog Input

4. Hardware Interface - Pins

The uLCD-43D/DT/DCT Module provides both a hardware and software interface. This section describes in detail the hardware interface pins of the device.

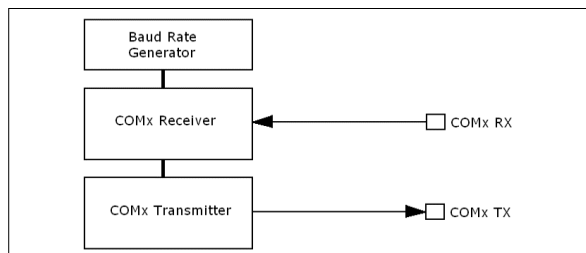
4.1. Serial Ports – TTL Level Serial

The DIABLO16 Processor has three hardware asynchronous serial ports (COM1 – COM3) that can be configured on a variety of the processors GPIO pins. TX/RX0 (COM0) is dedicated and its pins are fixed. All of the DIABLO16's serial ports can be used to communicate with external serial devices.

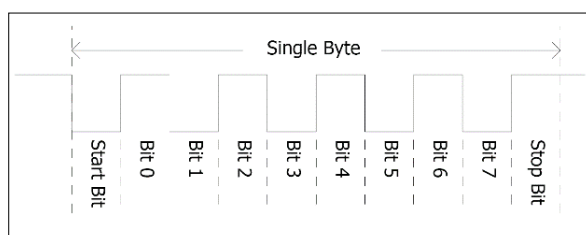
TX/RX0 are referred to as COM0, and is the only one used for programming the DIABLO16 itself.

The primary features are:

- Full-Duplex 8 bit data transmission and reception.
- Data format: 8 bits, No Parity, 1 Stop bit.
- Independent Baud rates from 300 baud up to 600K baud.
- Single byte transmits and receives or a fully buffered service. The buffered service feature runs in the background capturing and buffering serial data without the user application having to constantly poll any of the serial ports. This frees up the application to service other tasks.



A single byte serial transmission consists of the start bit, 8-bits of data followed by the stop bit. The start bit is always 0, while a stop bit is always 1. The LSB (Least Significant Bit, Bit 0) is sent out first following the start bit. Figure below shows a single byte transmission timing diagram.



COM0 is also the primary interface for 4DGL user program downloads and chip configuration PmmC programming. Once the compiled 4DGL application program (EVE byte-code) is downloaded and the user code starts executing, the serial port is then available to the user application. Refer to [Section 5](#) for more details on PmmC/Firmware programming.

TX0 pin (Serial Transmit COM0):

Dedicated Asynchronous Serial port COM0 transmit pin, TX0. Connect this pin to external serial device receive (Rx) signal. This pin is 5.0V tolerant.

RX0 pin (Serial Receive COM0):

Dedicated Asynchronous Serial port COM0 receive pin, RX0. Connect this pin to external serial device transmit (Tx) signal. This pin is 5.0V tolerant.

TX1 pin (Serial Transmit COM1):

Asynchronous Serial port COM1 transmit pin, TX1. Connect this pin to external serial device receive (Rx) signal. This pin is 5.0V tolerant. This can be configured to 1 of the GPIO pins, see table below.

RX1 pin (Serial Receive COM1):

Asynchronous Serial port COM1 receive pin, RX1. Connect this pin to external serial device transmit (Tx) signal. This pin is 5.0V tolerant. This can be configured to 1 of the GPIO pins, see table below.

TX2 pin (Serial Transmit COM2):

Asynchronous Serial port COM2 transmit pin, TX2. Connect this pin to external serial device receive (Rx) signal. This pin is 5.0V tolerant. This can be configured to 1 of the GPIO pins, see table below.

RX2 pin (Serial Receive COM2):

Asynchronous Serial port COM2 receive pin, RX2. Connect this pin to external serial device transmit (Tx) signal. This pin is 5.0V tolerant. This can be configured to 1 of the GPIO pins, see table below.

TX3 pin (Serial Transmit COM3):

Asynchronous Serial port COM3 transmit pin, TX3. Connect this pin to external serial device receive (Rx) signal. This pin is 5.0V tolerant. This can be configured to 1 of the GPIO pins, see table below.

RX3 pin (Serial Receive COM3):

Asynchronous Serial port COM3 receive pin, RX3. Connect this pin to external serial device transmit (Tx) signal. This pin is 5.0V tolerant. This can be configured to 1 of the GPIO pins, see table below.

DIABLO16 Serial TTL Comm Port
Configuration Options

| | TX1 | RX1 | TX2 | RX2 | TX3 | RX3 |
|------|-----|-----|-----|-----|-----|-----|
| PA0 | | ✓ | | ✓ | | ✓ |
| PA1 | ✓ | ✓ | ✓ | ✓ | ✓ | ✓ |
| PA2 | | ✓ | | ✓ | | ✓ |
| PA3 | ✓ | ✓ | ✓ | ✓ | ✓ | ✓ |
| PA4 | ✓ | ✓ | ✓ | ✓ | ✓ | ✓ |
| PA5 | ✓ | ✓ | ✓ | ✓ | ✓ | ✓ |
| PA6 | ✓ | ✓ | ✓ | ✓ | ✓ | ✓ |
| PA7 | ✓ | ✓ | ✓ | ✓ | ✓ | ✓ |
| PA8 | ✓ | ✓ | ✓ | ✓ | ✓ | ✓ |
| PA9 | ✓ | ✓ | ✓ | ✓ | ✓ | ✓ |
| PA10 | | ✓ | | ✓ | | ✓ |
| PA11 | | ✓ | | ✓ | | ✓ |
| PA12 | ✓ | ✓ | ✓ | ✓ | ✓ | ✓ |
| PA13 | ✓ | ✓ | ✓ | ✓ | ✓ | ✓ |
| PA14 | | | | | | |
| PA15 | | | | | | |

Please refer to the '[DIABLO16-4DGL-Internal-Functions.pdf](#)' document for information on how to set the DIABLO16 pin mappings.

4.2. General Purpose I/O

There are 16 general purpose Input/Output (GPIO) pins available to the user. These provide flexibility of individual bit operations along with serving collectively for byte wise operations using the BUS functions

DIABLO16 Alternate Pin Configurations
General Purpose I/O

| | Digital Input | Digital Output | Bus Read | Bus Write | Analog Read |
|------|---------------|----------------|----------|-----------|-------------|
| PA0 | ✓ | ✓ | ✓ | ✓ | ✓ |
| PA1 | ✓ | ✓ | ✓ | ✓ | ✓ |
| PA2 | ✓ | ✓ | ✓ | ✓ | ✓ |
| PA3 | ✓ | ✓ | ✓ | ✓ | ✓ |
| PA4 | ✓ | ✓ | ✓ | ✓ | |
| PA5 | ✓ | ✓ | ✓ | ✓ | |
| PA6 | ✓ | ✓ | ✓ | ✓ | |
| PA7 | ✓ | ✓ | ✓ | ✓ | |
| PA8 | ✓ | ✓ | ✓ | ✓ | |
| PA9 | ✓ | ✓ | ✓ | ✓ | |
| PA10 | ✓ | ✓ | ✓ | ✓ | |
| PA11 | ✓ | ✓ | ✓ | ✓ | |
| PA12 | ✓ | ✓ | ✓ | ✓ | |
| PA13 | ✓ | ✓ | ✓ | ✓ | |
| PA14 | ✓ | ✓ | ✓ | | |
| PA15 | ✓ | ✓ | ✓ | | |

Please refer to the separate document titled '[DIABLO16-4DGL-Internal-Functions.pdf](#)' for more information.

PA0-PA3:

General purpose I/O pins, or can serve as Analog Input pins. Each pin can be individually set for INPUT or OUTPUT or ANALOG. Power-Up Reset default is all INPUTS. When set as Digital Inputs, the pins are 3.3V tolerant. Digital GPIO can source/sink 10mA. For more information see [Section 14](#), 'Specifications and Ratings'.

When set as Analog Inputs, the pins have a 0 to 3.3V range, and have 12 bit resolution.

For more information, see [Section 4.11](#) 'Analog Inputs'.

PA4-PA11:

General purpose I/O pins. Each pin can be individually set for INPUT or OUTPUT. Power-Up Reset default is all INPUTS. When set as Digital Inputs, the pins are 5V tolerant. Digital GPIO can source/sink 10mA. For more

information see Section 14, ‘Specifications and Ratings’.

PA12-PA13:

PA12 and PA13 are used for the resistive touch controller or capacitive touch controller, on the uLCD-43DT or uLCD-43DCT models. These pins should ideally not be used for other I2C devices on these models, else it may impact Touch performance. These signals feature 4.7K pull up resistors on PA12 and PA13. These signals are present on the J1 Header and are not used for touch on the uLCD-43D so are available as GPIO on this model. These pins are 5V tolerant.

PA14-PA15:

General purpose I/O pins. Each pin can be individually set for INPUT or OUTPUT. Power-Up Reset default is all INPUTS. When set as Digital Inputs, the pins are 3.3V tolerant. These pins can be used for high speed I2C, please refer to Section 4.6 for more information.

4.3. System Pins

+5V IN (Module Voltage Input)

J1 Pin 12, J2 Pin 1

Module supply voltage input pins. At least one of these pins must be connected to a stable supply voltage in the range of 4.0 Volts to 5.5 Volts DC. Nominal operating voltage is 5.0 Volts. Note backlight brightness will be lower for voltages under 5.0V. 500mA of current is the minimum recommended for module stability.

3.3V_OUT (3.3V Output)

J1 Pin 20:

3.3V Output for the user, 250mA (HW REV 2.0, previously 150mA). Used for powering small external devices or components.

GND (Module Ground)

J1 Pin 11/13, J2 Pin 7/8

Device ground pins. Any of these pins can be used to GND the module, at least one must be connected to ground.

RESET (Module Master Reset)

J1 Pin 16, J2 Pin 9/10:

Module Master Reset pin. An active low pulse of greater than 2µs will reset the module. Internally pulled up to 3.3V via a 10K resistor. Only use open collector type circuits to reset the device if an external reset is required.

AUDENB (Audio Enable Output)

J1 Pin 2:

Output dedicated to enable or disable and external amplifier, where required. Active Low.

AUDIO (PWM Audio Input/Output)

J1 Pin 14:

Universal Input or Output specifically for Audio. This pin connects directly into the on-board amplifier, but also with the filtered PWM output from the DIABLO16 Processor. This pin can be used to input a signal into the on-board amplifier to play audio from an external device using the on-board amplifier, or as a line-level output to drive an external amplifier with DIABLO16 generated Audio. Note that AUDENB must be enabled (low) in DIABLO16 for any input signal to be heard.

4.4. Alternate Pin Function Overview

Most of the GPIO pins have an alternate function other than being for General Purpose I/O.

GPIO pins can be configured to be SPI, I²C, Serial or a range of other functions.

Note: Not all pins can be configured to be any of the alternate pin functions.

Please refer to the following tables which illustrate which pins can be associated alternative functions.

The following table illustrates which of the GPIO can be used for the four different I/O Support Functions.

| DIABLO16 Alternate Pin Configurations I/O Support Functions | | | | |
|--|-----------|---------|-------------|---------------|
| | Pulse Out | PWM Out | Pin Counter | Quadrature In |
| PA0 | ✓ | | | ✓ |
| PA1 | ✓ | | | ✓ |
| PA2 | ✓ | | | ✓ |
| PA3 | ✓ | | | ✓ |
| PA4 | ✓ | ✓ | ✓ | ✓ |
| PA5 | ✓ | ✓ | ✓ | ✓ |
| PA6 | ✓ | ✓ | ✓ | ✓ |
| PA7 | ✓ | ✓ | ✓ | ✓ |
| PA8 | ✓ | ✓ | ✓ | ✓ |
| PA9 | ✓ | ✓ | ✓ | ✓ |
| PA10 | | | | ✓ |
| PA11 | | | | ✓ |
| PA12 | | | | ✓ |
| PA13 | | | | ✓ |
| PA14 | | | | |
| PA15 | | | | |

Note: Once a pin is allocated to an alternate function, another pin cannot also be allocated to the same alternate function.

Please refer to the separate document titled '*DIABLO16-4DGL-Internal-Functions.pdf*' for more information on how to set the alternate pin configurations.

The Alternate pin functions have been broken up into a few tables for simplification. There are communication based functions, and I/O support based functions.

Further information is available in the next sections for each of the alternative pin functions.

Note: Quadrature In requires 2 Pins

The following table illustrates which of the GPIO can be used for the three different SPI channels available.

| DIABLO16 Alternate Pin Configurations SPI Communications | | | | | | | | | |
|---|----------|----------|----------|----------|----------|----------|----------|----------|----------|
| | SPI1 SDO | SPI1 SDI | SPI1 SCK | SPI2 SDO | SPI2 SDI | SPI2 SCK | SPI3 SDO | SPI3 SDI | SPI3 SCK |
| PA0 | | ✓ | | | ✓ | | | ✓ | |
| PA1 | ✓ | ✓ | ✓ | ✓ | ✓ | ✓ | ✓ | ✓ | ✓ |
| PA2 | | ✓ | | | ✓ | | | ✓ | |
| PA3 | ✓ | ✓ | ✓ | ✓ | ✓ | ✓ | ✓ | ✓ | ✓ |
| PA4 | ✓ | ✓ | ✓ | ✓ | ✓ | ✓ | ✓ | ✓ | ✓ |
| PA5 | ✓ | ✓ | ✓ | ✓ | ✓ | ✓ | ✓ | ✓ | ✓ |
| PA6 | ✓ | ✓ | ✓ | ✓ | ✓ | ✓ | ✓ | ✓ | ✓ |
| PA7 | ✓ | ✓ | ✓ | ✓ | ✓ | ✓ | ✓ | ✓ | ✓ |
| PA8 | ✓ | ✓ | ✓ | ✓ | ✓ | ✓ | ✓ | ✓ | ✓ |
| PA9 | ✓ | ✓ | ✓ | ✓ | ✓ | ✓ | ✓ | ✓ | ✓ |
| PA10 | | ✓ | | | ✓ | | | ✓ | |
| PA11 | | ✓ | | | ✓ | | | ✓ | |
| PA12 | ✓ | ✓ | ✓ | ✓ | ✓ | ✓ | ✓ | ✓ | ✓ |
| PA13 | ✓ | ✓ | ✓ | ✓ | ✓ | ✓ | ✓ | ✓ | ✓ |
| PA14 | | | | | | | | | |
| PA15 | | | | | | | | | |

The following table illustrates which of the GPIO can be used for the three different I²C channels available.

| DIABLO16 Alternate Pin Configurations I2C Communications | | | | | | |
|---|-----------------------|-----------------------|-----------------------|-----------------------|-----------------------|-----------------------|
| | I ² C1 SDA | I ² C1 SCL | I ² C2 SDA | I ² C2 SCL | I ² C3 SDA | I ² C3 SCL |
| PA0 | ✓ | ✓ | ✓ | ✓ | ✓ | ✓ |
| PA1 | ✓ | ✓ | ✓ | ✓ | ✓ | ✓ |
| PA2 | ✓ | ✓ | ✓ | ✓ | ✓ | ✓ |
| PA3 | ✓ | ✓ | ✓ | ✓ | ✓ | ✓ |
| PA4 | ✓ | ✓ | ✓ | ✓ | ✓ | ✓ |
| PA5 | ✓ | ✓ | ✓ | ✓ | ✓ | ✓ |
| PA6 | ✓ | ✓ | ✓ | ✓ | ✓ | ✓ |
| PA7 | ✓ | ✓ | ✓ | ✓ | ✓ | ✓ |
| PA8 | ✓ | ✓ | ✓ | ✓ | ✓ | ✓ |
| PA9 | ✓ | ✓ | ✓ | ✓ | ✓ | ✓ |
| PA10 | ✓ | ✓ | ✓ | ✓ | ✓ | ✓ |
| PA11 | ✓ | ✓ | ✓ | ✓ | ✓ | ✓ |
| PA12 | ✓ | ✓ | ✓ | ✓ | ✓ | ✓ |
| PA13 | ✓ | ✓ | ✓ | ✓ | ✓ | ✓ |
| PA14 | | SPECIAL | | SPECIAL | | SPECIAL |
| PA15 | SPECIAL | | SPECIAL | | SPECIAL | |

SPECIAL – please see [Section 4.6](#)

4.5. SPI

There are 3 user configurable SPI channels available for mapping to GPIO, for use by the user for the target application. All 3 SPI channels are Master only, and cannot be configured to be slaves at this time.

The SPI Bus speed is configurable using the **SPIx_Init()** Function in 4DGL, and allows various speeds from 78.125Khz to 17.5Mhz.

Please refer to the table in [Section 4.4](#) 'Alternate Pin Functions – Overview' for details on which GPIO can be configured for SPI.

Note: The additional SPI channel (SPI0) is dedicated to memory cards and cannot be reconfigured for alternate uses.

To map an SPI channel to a set of GPIO pins, the following 4DGL functions are used:

SPIx_SCK_pin(pin); // Map the SCK pin

SPIx_SDI_pin(pin); // Map the SDI pin

SPIx_SDO_pin(pin); // Map the SDO pin

Where 'SPIx' is substituted with SPI1, SPI2 or SPI3 accordingly, and 'pin' is the target GPIO pin compatible with that particular pin function.

Chip Select for use with SPI can be any other unused GPIO pin, configured as a Digital Output. The lowering and raising of the selected CS (GPIO) pin is done manually by the user in the 4DGL application.

Please refer to the separate document titled '*DIABLO16 4DGL Internal Functions*' for more information on how to use the Pulse Out functions, along with the separate document titled '*DIABLO16-Processor Datasheet*'.

4.6. I²C

There are 3 user configurable I²C channels available for mapping to GPIO, for use by the user for the target application. All 3 I²C channels are Master only, and cannot be configured to be slaves at this time.

Please refer to table in [Section 4.4](#) 'Alternate Pin Functions – Overview' for details on which GPIO can be configured for I²C.

To map an I²C Channel to a set of GPIO pins, the following 4DGL function is used:

I2Cx_Open(Speed, SCLpin, SDApin);

Where 'I2Cx' is substituted with I2C1, I2C2 or I2C3 accordingly, 'Speed' is the desired I2C Bus speed, and 'SCLpin' and 'SDApin' are the target GPIO pins compatible with that particular pin function.

Note: The normal I2C pins are PA0 to PA13, however use of these pins has a few limitations.

- a) There is no slew rate control at I2C_MED
- b) I2C_FAST is not truly 1MHz.

If either of these restrictions need to be addressed, a special case of SCLpin = PA14 and SDApin = PA15 exists ONLY for speeds I2C_MED (which uses slew rate control) and I2C_FAST (which is truly 1MHz)

Please refer to the separate document titled '*DIABLO16 4DGL Internal Functions*' for more information on how to use I²C functions, along with the separate document titled '*DIABLO16-Processor Datasheet*'.

4.7. Pulse Out

Pulse Out is used to create a single pulse of set duration on the selected pin of choice, which is inverted in polarity to the current state of the pin.

This 'inversion of polarity' means if a Pin is currently held HI, and Pulse Out is executed on that Pin, the pin will pulse LO and then return to HI. Same with vice versa, if currently LO and Pulse Out is executed on that Pin, it will pulse HI and then return to LO.

This is available in both blocking and non-blocking versions.

Please refer to the table in [Section 4.4](#) 'Alternate Pin Functions – Overview' for details on which GPIO can be configured to this.

Note: Each Pulse Out request needs at least a 1ms lead time due to the scheduling of the event with the internal 1ms timer.

To enable the Pulse Out function on a GPIO pin, the following 4DGL functions are used:

pin_Pulseout(pin, value); //Non-Blocking
pin_PulseoutB(pin, value); //Blocking

Where 'pin' is the target GPIO pin compatible with that particular pin function, and 'value' is the length of the pulse in milliseconds.

Please refer to the separate document titled '*DIABLO16-4DGL-Internal-Functions.pdf*' for more information on how to use the Pulse Out functions, along with the separate document titled '*DIABLO16-Processor-Datasheet*'.

4.8. PWM Out

There are 6 PWM channels available to be configured by the user, with 4 time bases available for selection.

The PWM can be configured to be used in Servo Mode, or Simple Mode.

Please refer to the table in [Section 4.4](#) 'Alternate Pin Functions – Overview' for details on which GPIO can be configured for PWM.

Servo Mode allows a millisecond input value with 0.01ms resolution, which runs at a frequency of approximately 50Hz or 50pps (20ms). The position of the servo is determined by the width of the pulse. Generally 1.5ms is 90 degrees, 1ms being 0 degrees

and 2ms being 180 degrees. Servos however vary, and the DIABLO16 PWM control can be adjusted to suit most applications.

Simple Mode allows a percentage input value with resolution of 0.1%, which runs at a frequency of approximately 70KHz.

To enable the PWM output on a GPIO pin, the following 4DGL function is used:

PWM_Init(pin, mode, value);

Where 'pin' is the GPIO compatible with the particular pin function, 'mode' is the type of PWM to generate, and 'value' is the parameter which defined the PWM pulse itself.

Please refer to the separate document titled '*DIABLO16 4DGL Internal Functions*' for more information on how to use the PWM functions, along with the separate document titled '*DIABLO16-Processor Datasheet*'.

4.9. Pin Counter

There are 6 Pin Counter channels available to be configured by the user, used to count incoming pulses with the ability to call a user function on overflow. The Pin Counter function is available for use in a variety of modes.

The counters can be read and written at any time.

Please refer to the table in [Section 4.4](#) 'Alternate Pin Functions – Overview' for details on which GPIO can be configured for this.

To enable the Pin Counter function on a GPIO pin, the following 4DGL function is used:

pin_Counter(pin, mode, OVFunction);

Where 'pin' is the GPIO pin compatible with this particular function, 'mode' is the type of trigger used to count on such as Rising/Falling/Edge, and 'OVFunction' is the user function to call when the counter overflows, if desired.

Please refer to the separate document titled '*DIABLO16 4DGL Internal Functions*' for more information on how to use the Pin Counter functions, along with the separate document titled '*DIABLO16-Processor Datasheet*'.

4.10. Quadrature In

There are two Quadrature Input channels available on the DIABLO16 processor, which requires 2 GPIO pins each.

Please refer to the table in [Section 4.4](#) 'Alternate Pin Functions – Overview' for details on which GPIO can be configured for Quadrature Input.

Quadrature Input allows a quadrature encoder to be connected, and the position counter and delta counter can be read at any time.

To enable the Quadrature Input function on a set of GPIO pins (2 pins required), the following 4DGL function is used:

Qencoderx(PHApin, PHBpin, mode);

Where 'Qencoderx' is substituted for Quencoder1 or Quencoder2 accordingly, 'PHApin' is the pin connected to the A Phase of the Encoder, 'PHBpin' is the pin connected to the B Phase of the Encoder, and 'mode' is not currently used so is to be set to zero (0).

Please refer to the separate document titled '*DIABLO16 4DGL Internal Functions*' for more information on how to use the Quadrature Input functions, along with the separate document titled '*DIABLO16-Processor Datasheet*'.

4.11. Analog Inputs

Please refer to the table in section 4.2 for details on which GPIO can be configured to be analog inputs.

The analog inputs on the DIABLO16 have a range of 0 to 3.3V, each with a max resolution of 12-bits.

The analog inputs can be read using three modes, standard mode, averaged mode or high speed mode.

Standard Mode results in a sample being immediately read. Standard Mode can read over 40000 values per second. Operates at 12-bit.

Averaged Mode results in a 16 sample being immediately read and their average returned. Averaged Mode can read approximately 20000 values per second. Operates at 12-bit.

Highspeed Mode collects a user specified number of samples at a user specified rate/frequency and can execute a user function when complete. The updated

value updates approximately 250000 times across 1-4 channels. Operates at 10-bit.

pin_Set(mode, pin);

Where 'mode' is the desired mode defined above, either Standard or Averaged, and 'pin' is the GPIO compatible with this function which is to become an Analog Input.

For highspeed mode, the following 4DGL function is used to set the pin and define the parameters:

ana_HS(rate, samples, 1buf, 2buf, 3buf, 4buf, func);

Where 'rate' is the number of samples per second, 'samples' is the number of samples to collect per channel, '1buf' → '4buf' are the buffer addresses for the 4 channels, and 'func' is the user function to call when the number of samples specified have been collected.

Please refer to the separate document titled '*DIABLO16 4DGL Internal Functions*' for more information on how to use the Pulse Out functions, along with the separate document titled '*DIABLO16-Processor Datasheet*'.

Note: Analog Inputs are 0-3.3V tolerant only. Do not apply voltages outside of this range as you will damage Diablo16.

5. PmmC/Firmware Programming

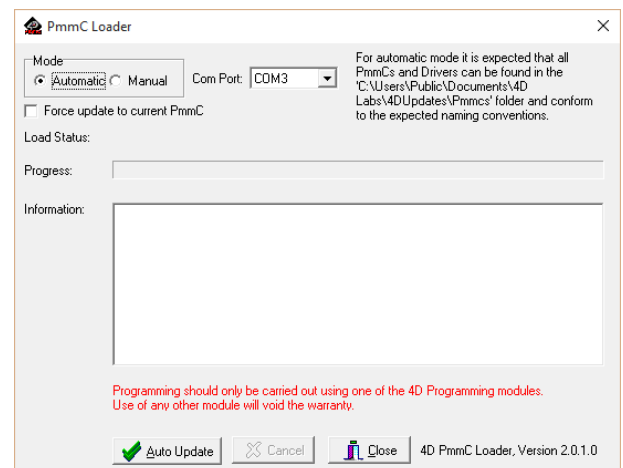
The DIABLO16 processor is a custom graphics processor. All functionality including the high level commands are built into the chip. This chip level configuration is available as a PmmC (Personality-module-micro-Code) file, which can be likened to traditional Firmware. There is also a Display Driver file, which separates specific display settings from the PmmC, unlike on the PICASO processor where everything is combined.

A PmmC file contains all of the low level micro-code information (analogy of that of a soft silicon) which define the characteristics and functionality of the device. The ability of programming the device with a PmmC file provides an extremely flexible method of customising as well as upgrading it with future enhancements.

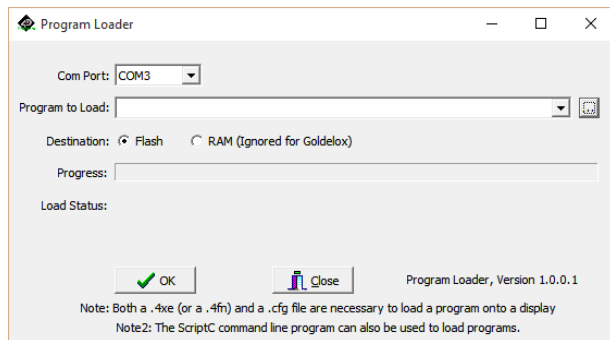
The Display Driver contains the initialisation and parameters associated with the particular display that is to be connected to the DIABLO16 processor.

The PmmC file and Display Driver file can only be programmed into the device via the COM0 serial port with the aid of Workshop 4, the 4D Systems IDE software.

Using a non-4D programming interface could damage your module, and **void your Warranty**.



Program Loader is a GUI interface designed to download Applications to either Flash or RAM, useful for testing or production loading, without the need for Workshop4 itself.



Please contact our Support Team for more information on what we can provide. Some solutions also exist for external processor based loading, if there is a requirement for that. This solution is available under NDA.

Using a non-4D programming interface could damage your module, and **void your Warranty.**

6. Module Features

The uLCD-43D/DT/DCT module is designed to accommodate most applications. Some of the main features of the module are listed below.

6.1. Display – 4.3” TFT Touch Screen

The uLCD-43D/DT/DCT module is equipped with a 4.3” TFT display. Details of the display are listed below:

- Screen Size: 4.3” diagonal, 480x272 resolution, 65K colours
- Integrated 4-Wire Resistive Touch Screen (DT)
- Integrated Capacitive Touch Screen (DCT)
- Screen Dimensions: 105.5 x 67.2 x 4.2mm
- Viewing Area: 95.04 x 53.85mm
- Pixel Pitch: 0.066(H) x 0.198(V)mm
- Brightness: 480cd/m²
- Contrast Ratio: 350:1
- Viewing Angle Above Centre: 35 degrees
- Viewing Angle Below Centre: 15 degrees
- Viewing Angle Left of Centre: 45 degrees
- Viewing Angle Right of Centre: 45 degrees
- Viewing Direction: 12 O'clock
- 5x2 Parallel LEDs for Backlighting

Note: The Displays used are the highest rated 'Grade A' Displays, which allow for 0-4 defective pixels. A defective pixel could be solid Black (Dead), White, Red, Green or Blue.

6.2. DIABLO16 Processor

The module is designed around the DIABLO16 Graphics Controller from 4D-Labs.



The DIABLO16 is a smart Controller and the interface to the TFT- LCD displays is almost plug-n-play.

All of the data and control signals are provided by the chip to interface directly to the display.

Powerful graphics, text, image, animation and countless more features are built right inside the chip.

The data sheet for the processor is available from the <http://www.4dsystems.com.au> website:

“DIABLO16 Processor Datasheet”

6.3. Audio

Audio playback support in the DIABLO16 Processor enables the uLCD-43D/DT/DCT module to play audio WAV files stored in the micro-SD memory card. PWM and an on-board audio amplifier with 8Ω speaker ensure ample audio output capability. A simple instruction enables the user to play/pause/stop audio files while continuing the execution of the user application code, such as display updates, touch recognition, communications, etc. The audio system also allows real time pitch change of audio samples.

For a complete list of audio commands please refer to the separate document titled:

“DIABLO16 4DGL Internal Functions”

Note: The on-board speaker is a small device designed to project into an audio cavity. It is not very loud by itself. To enable louder audio, it is recommended to use a larger external 8Ω speaker. See the 'Hardware Interface Pins' – 'System Pins' section for more information.

6.4. SD/SDHC Memory Cards

The module supports micro-SD memory cards via the on-board micro-SD connector. The memory card is used for all multimedia file retrieval such as images, animations and movie clips. The memory card can also be used as general purpose storage for data logging applications. Support is available for off the shelf micro-SD (< 4GB) and high capacity HC memory cards (4GB and above).

Note: A microSD card capable of SPI is a requirement for all 4D Systems' display modules powered by Goldelox, Picaso or Diablo16 Processors. If a non-SPI compatible card is used, it will simply fail to mount, or may cause intermittent issues resulting in lock ups and crashing of the application. Please refer to the 4D Systems website for microSD cards offered by 4D Systems.

6.5. Fat16

The uLCD-43D/DT/DCT Module uses off the shelf standard SDHC/SD/micro-SD memory cards (SPI Compatible Only) with up to 4GB capacity usable with FAT16 formatting. For any FAT file related operations, before the memory card can be used it must first be formatted with FAT16 option. The formatting of the card can be done on any PC system with a card reader. Select the appropriate drive and choose the FAT16 (or just FAT in some systems) option when formatting. The card is now ready to be used in the DIABLO16 based application.



The DIABLO16 Processor also supports high capacity HC memory cards (4GB and above). The available capacity of SD-HC cards varies according to the way the card is partitioned and the commands used to access it. Refer to the 4D Systems RMPET tool in the Workshop4 IDE.

The FAT partition is always first (if it exists) and can be up to the maximum size permitted by FAT16. Windows 7 will format FAT16 up to 4GB. Windows XP will format FAT16 up to 2GB and the Windows XP command prompt will format FAT16 up to 4GB.

7. Display Precautions

- Avoid having to display the same image/object on the screen for lengthy periods of time. This will cause a burn-in which is a common problem with all types of display technologies. Blank the screen after a while or dim it very low by adjusting the contrast. Better still; implement a screen saver feature.
- Moisture and water can damage the display. Moisture on the surface of a powered display will cause the electrodes to corrode. Wipe off any moisture gently or let the display dry before usage.
- Dirt from fingerprint oil and fat can easily stain the surface of the display. Gently wipe off any stains with a soft lint-free cloth.
- The performance of the display will degrade under high temperature and humidity. Avoid such conditions when storing.
- Do not tamper with the display flex cable that is connected to the control board. This may affect the connection between the display and the driving circuitry and cause failure.
- Displays are susceptible to mechanical shock and any force exerted on the module may result in deformed zebra stripes, a cracked display cell and broken backlight
- Always use the mounting holes on the module's corner plates to mount the display.

8. Hardware Tools

The following hardware tools are required for full control of the gen4 Integrated Display Modules.

8.1. Programming Cable/Adaptor

The 4D Programming Cable and uUSB-PA5/uUSB-PA5-II Programming Adaptors are essential hardware tools to program, customise and test the DIABLO16 Processor.

Either the 4D Programming Cable or the uUSB-PA5 Programming Adaptor can be used.

The 4D programming interfaces are used to program a new Firmware/PmmC, Display Driver and for downloading compiled 4DGL code into the processor. They even serve as an interface for communicating serial data to the PC.

The 4D Programming Cable and uUSB-PA5 Programming Adaptor are available from 4D Systems, www.4dsystems.com.au



[4D Programming Cable](#)



[uUSB-PA5/uUSB-PA5-II Programming Adaptor](#)

Note: In addition to these modules, the [gen4-PA](#) and [4D-UPA](#) can also be used.

Using a non-4D programming interface could damage your processor, and **void your Warranty**. These programming interfaces are available from 4D Systems, www.4dsystems.com.au

9. 4DGL - Software Language

The uLCD-43D/DT/DCT Module utilises the DIABLO16 processor, which belongs to a family of processors powered by a highly optimised soft core virtual engine, EVE (Extensible Virtual Engine).

EVE is a proprietary, high performance virtual-machine with an extensive byte-code instruction set optimised to execute compiled 4DGL programs. 4DGL (4D Graphics Language) was specifically developed from ground up for the EVE engine core. It is a high level language which is easy to learn and simple to understand yet powerful enough to tackle many embedded graphics applications.

4DGL is a graphics oriented language allowing rapid application development, and the syntax structure was designed using elements of popular languages such as C, Basic, Pascal and others.

Programmers familiar with these languages will feel right at home with 4DGL. It includes many familiar instructions such as IF..ELSE..ENDIF, WHILE..WEND, REPEAT..UNTIL, GOSUB..ENDSUB, GOTO, PRINT as well as some specialised instructions SERIN, SEROUT, GFX_LINE, GFX_CIRCLE and many more.

For detailed information pertaining to the 4DGL language, please refer to the following documents: **"4DGL-Programmers-Reference-Manual.pdf"** **"DIABLO16-4DGL-Internal-Functions.pdf"**

To assist with the development of 4DGL applications, the Workshop 4 IDE combines a full-featured editor, a compiler, a linker and a down-loader into a single PC-based application. It's all you need to code, test and run your applications.

4DGL is available to be written in two of the four environments offered by the Workshop 4 IDE, Designer and ViSi.

10. 4D Systems - Workshop4 IDE

Workshop 4 is a comprehensive software IDE that provides an integrated software development platform for all of the 4D family of processors and modules. The IDE combines the Editor, Compiler, Linker and Down- Loader to develop complete 4DGL application code. All user application code is developed within the Workshop 4 IDE.



The Workshop 4 IDE supports multiple development environments for the user, to cater for different user requirements and skill level.

- The **Designer** environment enables the user to write 4DGL code in its natural form to program the uLCD-35DT Module.
- A visual programming experience, suitably called **ViSi**, enables drag-and-drop type placement of objects to assist with 4DGL code generation and allows the user to visualise how the display will look while being developed.
- An advanced environment called **ViSi-Genie** doesn't require any 4DGL coding at all, it is all done automatically for you. Simply lay the display out with the objects you want, set the events to drive them and the code is written for you automatically. ViSi-Genie provides the latest rapid development experience from 4D Systems.
- A **Serial** environment is also provided to transform the display module into a slave serial module, allowing the user to control the display from any host microcontroller or device with a serial port.

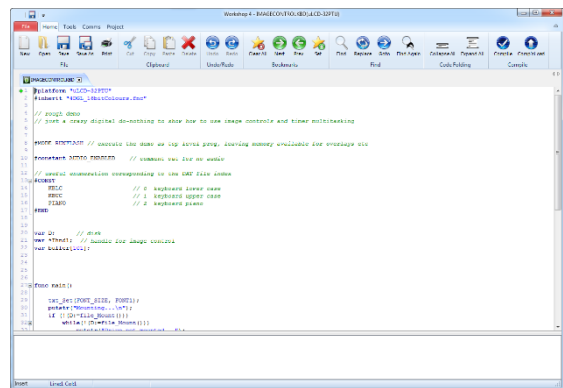
The Workshop 4 IDE is available from the 4D Systems website. www.4dsystems.com.au

For a comprehensive manual on the Workshop 4 IDE Software along with other documents, refer to the documentation from the 4D Systems website, on the Workshop 4 product page.

10.1. Designer Environment

Choose the Designer environment to write 4DGL code in its raw form.

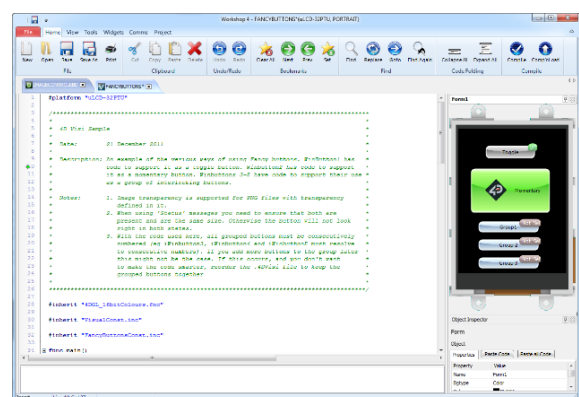
The Designer environment provides the user with a simple yet effective programming environment where pure 4DGL code can be written, compiled and downloaded to the uLCD-35DT Module.



10.2. ViSi Environment

ViSi was designed to make the creation of graphical displays a more visual experience.

ViSi is a great software tool that allows the user to see the instant results of their desired graphical layout. Additionally, there is a selection of inbuilt dials, gauges and meters that can simply be placed onto the simulated module display. From here each object can have its properties edited, and at the click of a button all relevant 4DGL code associated with that object is produced in the user program. The user can then write 4DGL code around these objects to utilise them in the way they choose.



10.3. ViSi Genie Environment

ViSi-Genie is a breakthrough in the way 4D Systems' graphic display modules are programmed. It is an environment like no other, a code-less programming environment that provides the user with a rapid visual experience, enabling a simple GUI application to be 'written' from scratch in literally seconds.

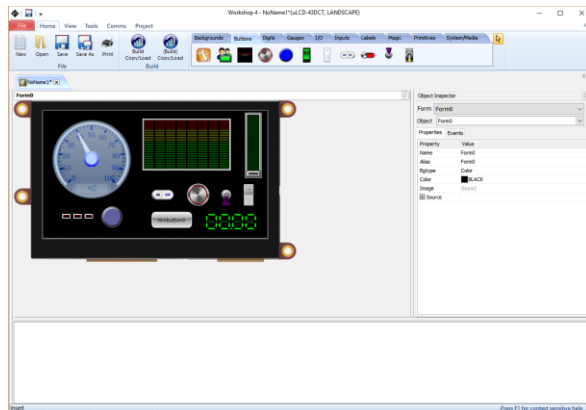
ViSi-Genie does all the background coding, no 4DGL to learn, it does it all for you.

Pick and choose the relevant objects to place on the display, much like the ViSi Environment yet without having to write a single line of code. Each object has parameters which can be set, and configurable events to animate and drive other objects or communicate with external devices.

Simply place an object on the screen, position and size it to suit, set the parameters such as colour, range, text, and finally select the event you wish the object to be associated with, it is that simple.

In seconds you can transform a blank display into a fully animated GUI with moving sliders, animated press and release buttons, and much more. All without writing a single line of code!

ViSi-Genie provides the user with a feature rich rapid development environment, second to none.



ViSi-Genie's functionality can be extended with the purchase of a Workshop4 PRO License.

Workshop4 PRO adds a professional set of features to the ViSi-Genie environment called Genie-Magic. The added features allow the user to add in 4DGL scripts, which can be activated from the display itself, from an interfacing Host, or from an external sensor or device.

These PRO set of features of Genie-Magic allow the User to create an immensely powerful GUI system with a fraction of the effort required by other systems.

10.4. Serial Environment

The Serial environment in the Workshop 4 IDE provides the user the ability to transform a 4D Systems Intelligent Display, into a slave serial graphics controller.

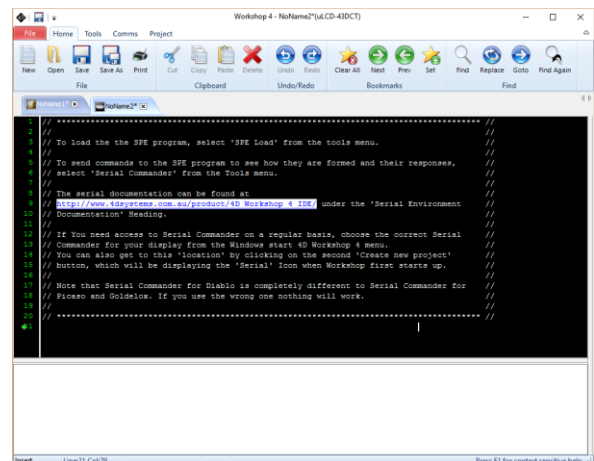
This enables the user to use their favourite microcontroller or serial device as the Host, without having to learn 4DGL or program in a separate IDE.

Once the display module is configured by the Serial Environment (by downloading what is called the SPE application to the module), commands can be sent from the users host microcontroller to display primitives, images, sound and video, and can even be used to display ViSi generated graphics and widgets.

The Serial Environment should not be taken as being basic in terms of its capabilities, as it has the full 4DGL command set behind it, but available from the Host rather than from programming the display module itself using the Workshop4 IDE.

Virtually anything created in Designer or ViSi, can be designed or controlled from the Serial Environment.

Please refer to the *"Diablo16 Serial Command Set Reference Manual"* from the [Workshop 4 product page](#) on the 4D Systems website for a complete listing of all the supported Serial commands.



11. Starter Kit

4D Systems highly recommends all first time buyers of 4D Systems' displays, to purchase the Starter Kit when purchasing their first 4D Systems display solution.

The Starter Kit provides all the hardware that is required to get the user up and running.

Not all development environments and features will be needed by every user, however by purchasing the display solution in a Starter Kit, it ensures that if you want to take full advantage of the 4D Systems display solution and try out each of the 4D Workshop4 Environments, upgrade PmmC/firmware, you can.

The **Designer** environment can utilise every feature of the display, however depending on the user requirements, a micro-SD (uSD) card may not be required. The uSD card is used when displaying images/video/sound, along with datalogging to uSD, and a programming cable is definitely required for downloading compiled code and PmmC/Firmware updates.

The **ViSi** environment is the same as Designer in terms of feature utilisation, but is image based so requires a uSD card, along with a programming cable.

The **ViSi-Genie** environment is also image based, and therefore requires a uSD card and programming cable also.

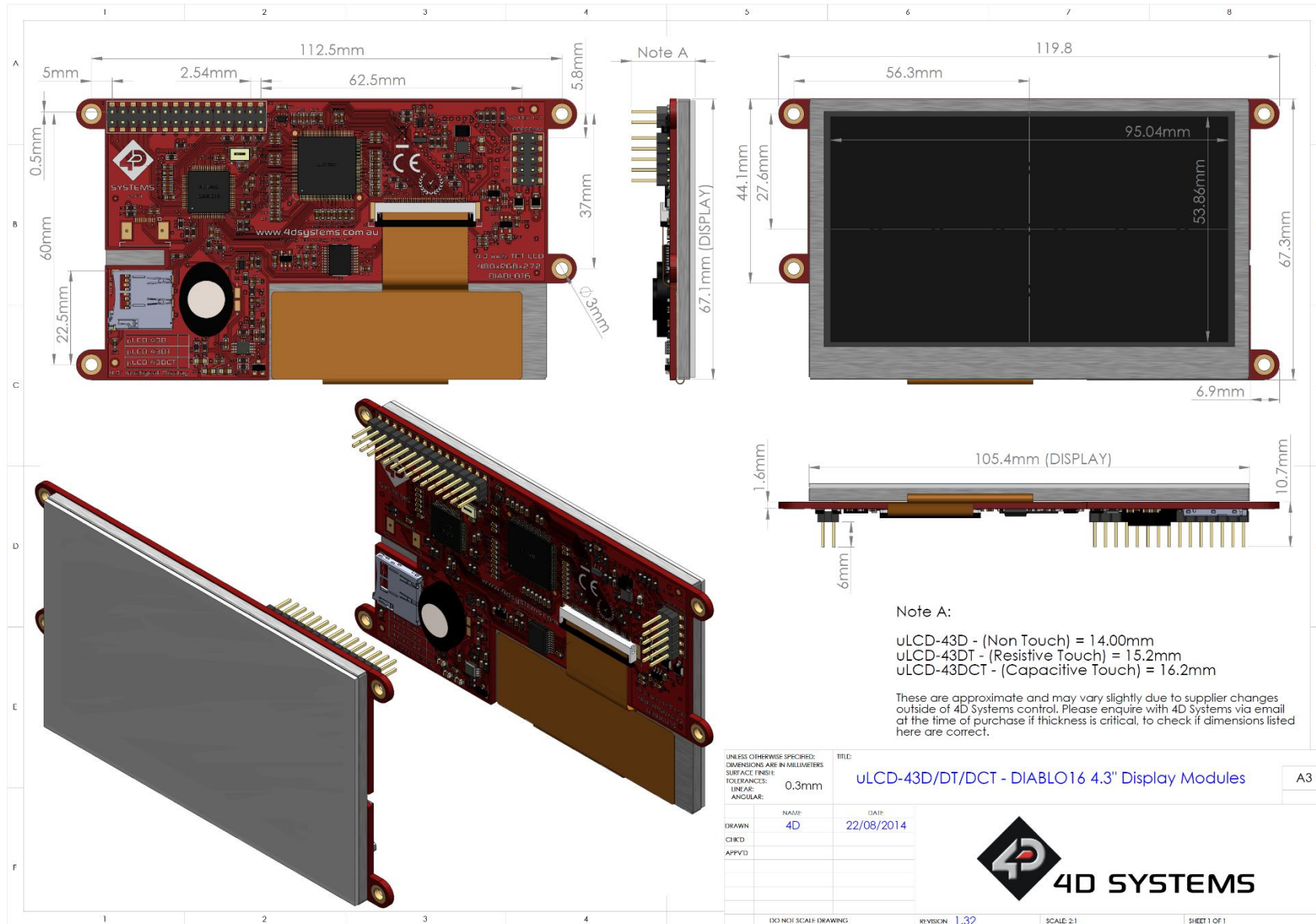
The **Serial** environment does not require either a uSD or Programming cable to be used, however can utilise both depending on the user requirements. The uSD card can be used for such things as storage of multimedia files and datalogging, and the Programming cable for PmmC/Firmware updates, or changing to one of the other three programming environments.

The Starter Kit includes:

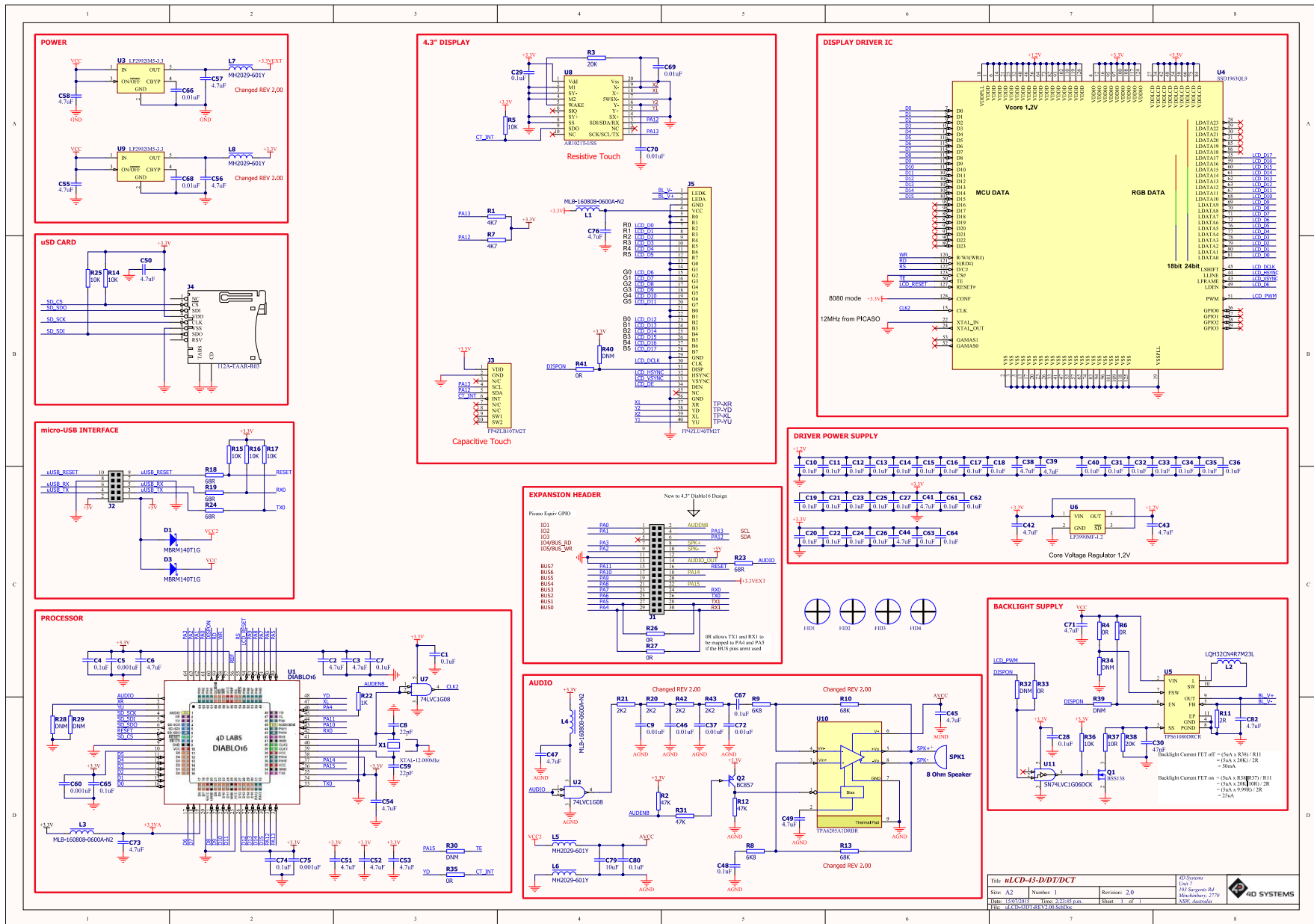
- uLCD-43D/DT/DCT Display Module
- 4GB microSD Card
- uUSB-PA5-II Programming Adaptor
- 150mm 5 way Female-Female jumper cable, for quick connection to another device or breadboard
- 5 way Male-Male adaptor (for converting the Female-Female cable to be Male-Female)

Simply select the Starter Kit option when purchasing the chosen display module on the 4D Systems shopping cart, or from your local distributor.

12. Mechanical Details



13. Schematic Diagram



| | | |
|--------------------------------|-------------------------|----------------------------------|
| Title: uLCD-43-D/D1/DCT | | 40 System |
| Size: A2 | Number: 1 | Part Number: 43 |
| Time: 1/20/2017 | Time: 2:14:45 am | Revision: 2.0 |
| File: uLCD43D1.dwg | Sheet: 1 of 1 | Manufacturer: 4DS SYSTEMS |

14. Specifications and Ratings

ABSOLUTE MAXIMUM RATINGS

| | |
|--|----------------|
| Operating ambient temperature | -20°C to +70°C |
| Storage temperature | -30°C to +80°C |
| Voltage on any digital input pin with respect to GND | -0.3V to 6.0V |
| Voltage on VCC with respect to GND | -0.3V to 6.0V |
| Maximum current sunk/sourced by any pin | 10.0mA |
| Maximum current sunk/sourced by all ports | 200.0mA |

NOTE: Stresses above those listed here may cause permanent damage to the device. This is a stress rating only and functional operation of the device at those or any other conditions above those indicated in the recommended operation listings of this specification is not implied. Exposure to maximum rating conditions for extended periods may affect device reliability.

RECOMMENDED OPERATING CONDITIONS

| Parameter | Conditions | Min | Typ | Max | Units |
|--------------------------|---------------------------------|-------|-----|-------|-------|
| Supply Voltage (VCC) | Stable external supply required | 4.0 | 5.0 | 5.5 | V |
| Processor voltage (VP) | | -- | 3.3 | -- | V |
| Operating Temperature | | -10 | -- | +60 | °C |
| Input Low Voltage (VIL) | all pins | 0 | -- | 0.2VP | V |
| Input High Voltage (VIH) | non 5V tolerant pins | 0.8VP | -- | 3.3 | V |
| Input High Voltage (VIH) | PA4-PA13, RX0 and TX0 pins | 0.8VP | -- | 5.5 | V |
| Reset Pulse | External Open Collector | 2.0 | -- | -- | µs |
| Operational Delay | Power-Up or External Reset | 500 | -- | 3000 | ms |

GLOBAL CHARACTERISTICS BASED ON OPERATING CONDITIONS

| Parameter | Conditions | Min | Typ | Max | Units |
|---|--|-----|-------|-----|-------|
| Supply Current (ICC) | 3.3V, heavily depends on screen usage conditions, sleep mode, audio, SD card | -- | 250 | -- | mA |
| Output Low Voltage (VOL) | 3.3V, IOL = 3.4mA | -- | -- | 0.4 | V |
| Output High Voltage (VOH) | 3.3V, IOL = -2.0mA | 2.4 | -- | -- | V |
| Capacitive Loading | All pins | -- | -- | 50 | pF |
| Flash Memory Endurance | DIABLO PmmC Programming | -- | 10000 | -- | E/W |
| LCD Backlight Operating Hours Endurance | Measured until display is 50% original brightness, 25 degrees C. | -- | 20000 | -- | Hours |

ORDER INFORMATION

Order Code:

uLCD-43D – Non Touch 4.3" Model
uLCD-43DT – Resistive Touch 4.3" Model
uLCD-43DCT – Capacitive Touch 4.3" Model

Packaging:

Module sealed in an antistatic foam padded 4D Systems box

15. Hardware Revision History

| Revision Number | Date | Description |
|-----------------|------------|---|
| 1.32 | 17/10/2014 | Initial Public Release |
| 2.0 | 22/06/2015 | Audio Amplifier circuitry has been improved to remove background noise. Additional filtering added on 3.3V supply. Power circuit has been changed: U3 & U9 are different components now and L7 and L8 have been added. 30Pin Header 3.3V output can deliver 250mA instead of 150mA. |
| | | |
| | | |
| | | |
| | | |
| | | |
| | | |
| | | |
| | | |
| | | |
| | | |
| | | |
| | | |
| | | |
| | | |
| | | |
| | | |
| | | |
| | | |
| | | |
| | | |

16. Datasheet Revision History

| Revision Number | Date | Description |
|-----------------|------------|--|
| 1.5 | 17/10/2017 | Initial Public Release |
| 1.6 | 04/03/2019 | Cosmetic Changes to microLCD Datasheet range |
| | | |
| | | |
| | | |
| | | |
| | | |
| | | |
| | | |
| | | |
| | | |
| | | |
| | | |
| | | |
| | | |
| | | |
| | | |
| | | |
| | | |
| | | |
| | | |
| | | |

17. Legal Notice

Proprietary Information

The information contained in this document is the property of 4D Systems Pty. Ltd. and may be the subject of patents pending or granted, and must not be copied or disclosed without prior written permission.

4D Systems endeavours to ensure that the information in this document is correct and fairly stated but does not accept liability for any error or omission. The development of 4D Systems products and services is continuous and published information may not be up to date. It is important to check the current position with 4D Systems. 4D Systems reserves the right to modify, update or makes changes to Specifications or written material without prior notice at any time.

All trademarks belong to their respective owners and are recognised and acknowledged.

Disclaimer of Warranties & Limitation of Liability

4D Systems makes no warranty, either expressed or implied with respect to any product, and specifically disclaims all other warranties, including, without limitation, warranties for merchantability, non-infringement and fitness for any particular purpose.

Information contained in this publication regarding device applications and the like is provided only for your convenience and may be superseded by updates. It is your responsibility to ensure that your application meets with your specifications.

Images and graphics used throughout this document are for illustrative purposes only. All images and graphics used are possible to be displayed on the 4D Systems range of products, however the quality may vary.

In no event shall 4D Systems be liable to the buyer or to any third party for any indirect, incidental, special, consequential, punitive or exemplary damages (including without limitation lost profits, lost savings, or loss of business opportunity) arising out of or relating to any product or service provided or to be provided by 4D Systems, or the use or inability to use the same, even if 4D Systems has been advised of the possibility of such damages.

4D Systems products are not fault tolerant nor designed, manufactured or intended for use or resale as on line control equipment in hazardous environments requiring fail – safe performance, such as in the operation of nuclear facilities, aircraft navigation or communication systems, air traffic control, direct life support machines or weapons systems in which the failure of the product could lead directly to death, personal injury or severe physical or environmental damage ('High Risk Activities'). 4D Systems and its suppliers specifically disclaim any expressed or implied warranty of fitness for High Risk Activities.

Use of 4D Systems' products and devices in 'High Risk Activities' and in any other application is entirely at the buyer's risk, and the buyer agrees to defend, indemnify and hold harmless 4D Systems from any and all damages, claims, suits, or expenses resulting from such use. No licenses are conveyed, implicitly or otherwise, under any 4D Systems intellectual property rights.

18. Contact Information

For Technical Support: www.4dsystems.com.au/support

For Sales Support: sales@4dsystems.com.au

Website: www.4dsystems.com.au

Copyright 4D Systems Pty. Ltd. 2000-2019.