

CP-2FxxJ Series - CP-2FC-6, CP-2FCG-6

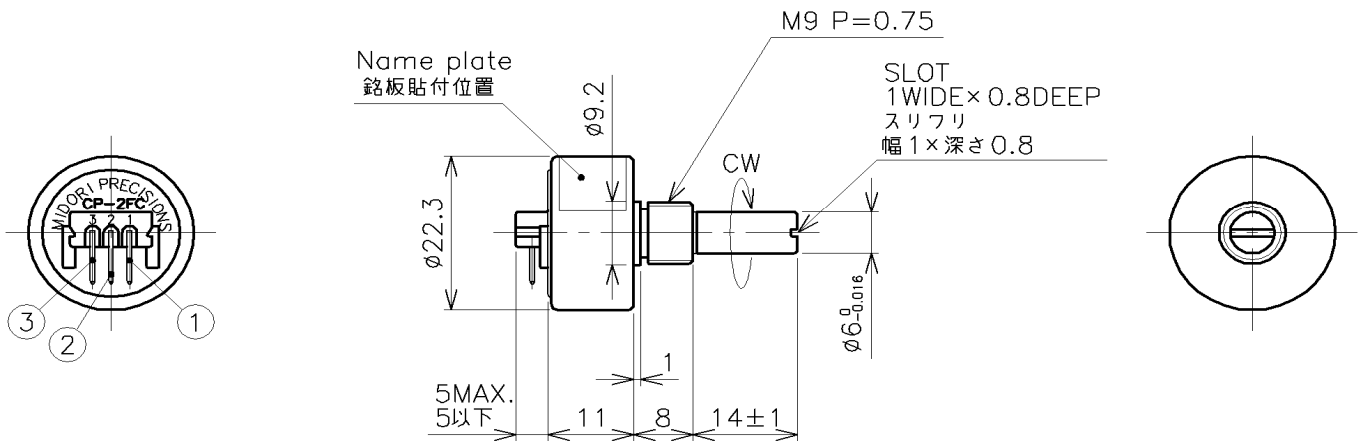


- Conductive Plastic Angle Sensor
- Effective Electrical Travel : 340°
- Independent Linearity : ±1%
- Bushing Mount
- Matching connector with lead wires (L=200mm)
- Shaft :
 - Φ6mm Shaft : CP-2FC-6
 - Φ6mm & O-ring : CP-2FCG-6

【Material】

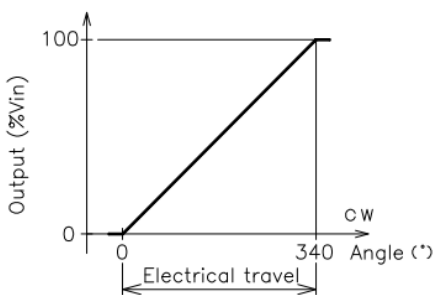
- Housing : Aluminum
- Shaft : Stainless Steel

Dimension [mm]

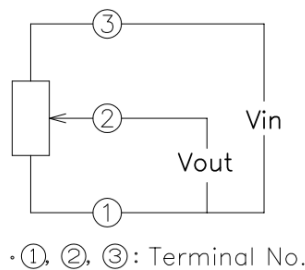


Maching Connector: (Housing) P/N HNC2-2.5S-3, (Contact) P/N HNC-2.5S-D-A: Hirose Electric Co.

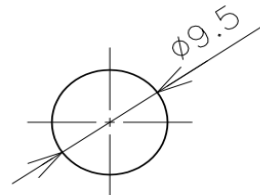
Output Characteristic:



Schematic



Mounting



【Model No.】	CP-2FC-6	CP-2FCG-6
--------------------	----------	-----------

【Electrical Data】

Effective Electrical Angle	340 +2, -3	°
Total Resistance	1, 5	kΩ
Total Resistance Tolerance	±20	%
Independent Linearity	±1	%
Power Rating	0.5/50°C	W
Output Smoothness	MAX. 0.1	%
Insulation Resistance	MIN. 100/DC1000V	MΩ
Dielectric Strength	AC1000/1min.	V
Temperature Coefficient of Resistance	±1000	ppm/K

【Mechanical Data】

Total Mechanical Travel	360 Endless		°
Torque	MAX. 3.4	MAX.20	mN·m
Thrust Load Tolerance	1		N
Radial Load Tolerance	2		N
Mass	20 Appx.		g

【Environmental Dat】

Life	10 Million	cycle
Category Temperature Range	-40~+100	°C
Storage Temperature Range	-40~+100	°C
Vibration	150m/s ² 2000Hz 3axis 2hours each	
Shock	500m/s ² 11ms 6axis 3times	

■ Mounting Hardware

M9 Nut
Toothed Lock Washer (Internal)
1pcs each

■ Handling Instruction

To avoid burnout of resistive element, do not supply 1mA Min. current to terminal 2.