

Conductive Plastic Linear Sensor

LP-FJ Series - LP-xxFJ, LP-xxFJS



- Conductive Plastic Linear Sensor
- Effective Electrical Travel:
50~150mm±0.5mm
200~300mm±1mm
- Independent Linearity :
50mm : ±0.5%
100~300mm : ±0.3%
- IP Rating : IP65(LP-xxFJS)

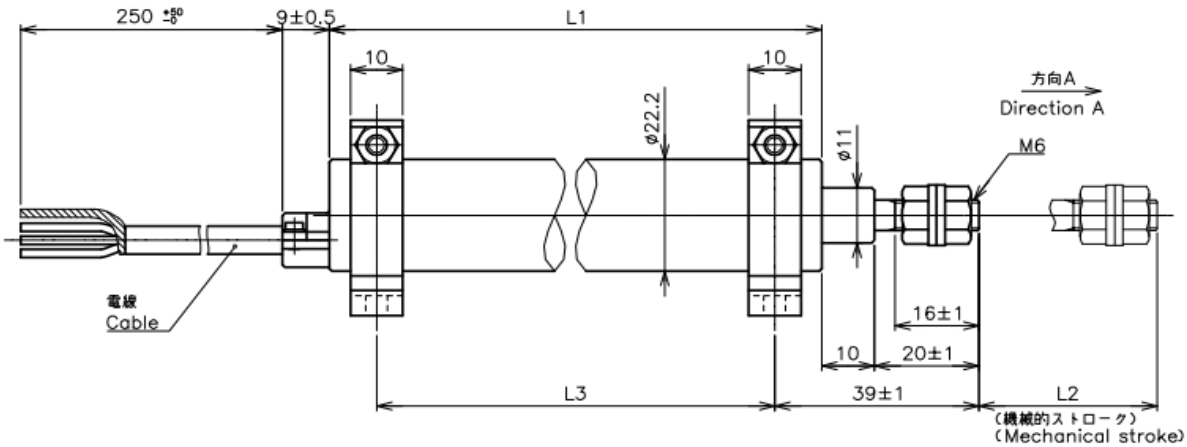
【Option】

- Independent Linearity :
50mm : ±0.2%
100~300mm : ±0.1%

【Material】

- Housing : Aluminum
- Shaft : Stainless Steel
- Bearing : Copper alloy

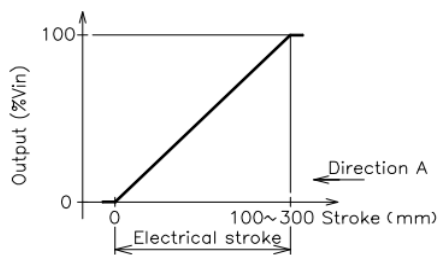
Dimension [mm]



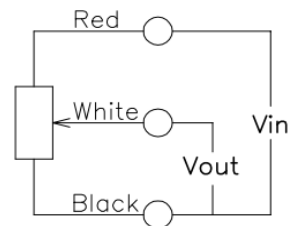
【Model No.】	LP-50FJ	LP-100FJ	LP-150FJ	LP-200FJ	LP-250FJ	LP-300FJ
	LP-50FJS	LP-100FJS	LP-150FJS	LP-200FJS	LP-250FJS	LP-300FJS

【Housing Length・Mounting】							
Housing Length(L1)	88±1	138±1	188±1	238±1	288±1	338±1	mm
Mech. Stroke(L2)	54±1	104±1	154±1	204±1	254±1	304±1	mm
MTG Holes Spacing(L3)	70±1	120±1	170±1	220±1	270±1	320±1	mm

Output Characteristics

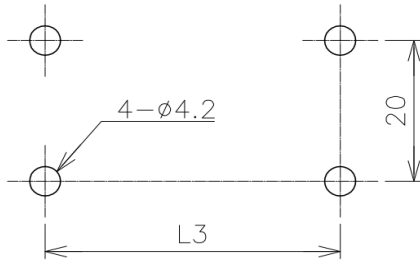


Schematic

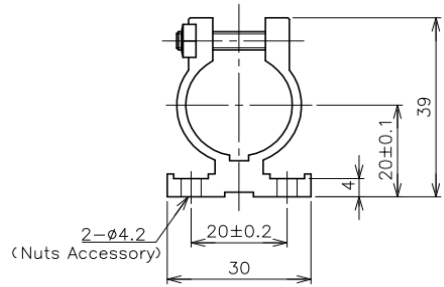


• Red,White,Black indicate lead colors.

■ Mounting



IMTG Holes Spacin



【Model No.】	LP-50FJ	LP-100FJ	LP-150FJ	LP-200FJ	LP-250FJ	LP-300FJ
	LP-50FJS	LP-100FJS	LP-150FJS	LP-200FJS	LP-250FJS	LP-300FJS

【Electrical Data】

Effective Electrical Travel	50±0.5	100±0.5	150±0.5	200±1	250±1	300±1	mm
Total Resistance	1, 5	1, 5	1, 5	1, 5	5	10	kΩ
Total Resistance Tolerance	±20						%
Independent Linearity	±0.5(Special Linearity ±0.2%)	±0.3(Special Linearity ±0.1%)					%
Input Voltage	MAX. DC36/50°C						V
Output Smoothness	MAX. 0.1						%
Insulation Resistance	MIN. 100 / DC 500V						MΩ
Dielectric Strength	AC500 / 1 Minute						V
TC of Resistance	±400						ppm/K

【Mechanical Data】

Friction	MAX.1	MAX.4	MAX.1	MAX.4	MAX.1	MAX.4	MAX.1	MAX.4	MAX.1	MAX.4	MAX.1	MAX.4	N
Mass	120 Approx.	160 Approx.	200 Approx.	240 Approx.	280 Approx.	320 Approx.	g						

【Environmental Data】

Life	5 Million											Cycle	
Operating Temp.	-25~+80											°C	
Storage Temperature Range	-25~+80											°C	
Vibration	100m/s ² 20~500Hz 3axis 2hours each												
Shock	500m/s ²												
IP Rating	IP40	IP65※	IP40	IP65※	IP40	IP65※	IP40	IP65※	IP40	IP65※	IP40	IP65※	

※Except leads end

■ Accessories

Mounting Foot : M4 Nut 4 pieces each
 Shaft Joint : M6 Nut, Plain washer 2 pieces each

■ Handling Instruction

To avoid burnout of resistive element, do not supply 1mA Min. current to terminal 2.