

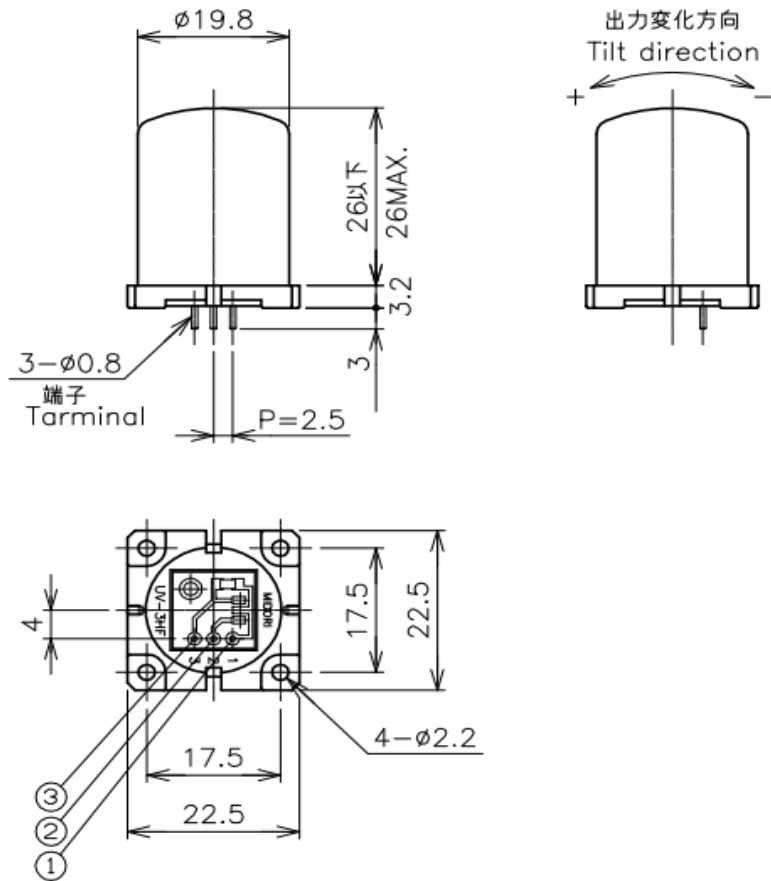
Contactless Hall-IC Tilt Angle Sensor

UV Series - UV-3HF

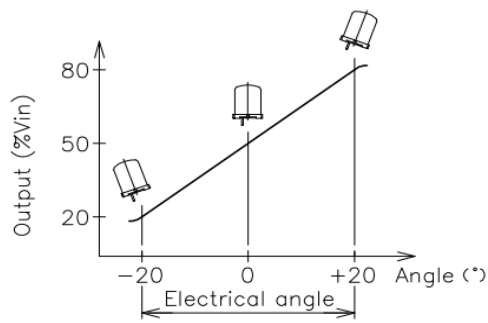


- Contactless Hall-IC Tilt Angle Sensor
- Buoy-float pendulum mechanism
- Effective Electrical Tilt Angle : $\pm 20^\circ$
- Center-based Linearity : $\pm 4\%FS$
- 【Material】
- Housing : PBT
- Cover : Aluminum

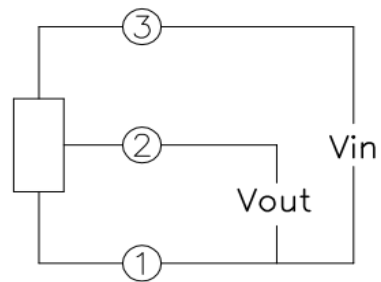
■ Dimension [mm]



■ Output Characteristics



■ Schematic



• ①, ②, ③ : Terminal No.

【Model No.】	UV-3HF
--------------------	---------------

【Electrical Data】

Effective Electrical Tilt Angle	±20	°
Tilt Sensitivity	MAX. 0.5	°
Output Range	20~80	%Vin
Output Sensitivity	MIN. 1.05(~1.75)	%Vin/°
Index Point	50±5	%Vin
Zero-based Linearity	±4(FS=40°)	%FS
Input Voltage	DC 5±0.5	V
Load Resistance	MIN. 10	kΩ
Supply Current	MAX. 10	mA
Insulation Resistance	MAX. 100/DC50V	MΩ
Temp. Characteristics -30°C~80°C (Reference Temp. 25°C)	At 0°: 0.5° At ±20°: 1.5°	

【Mechanical Data】

Response time	MAX. 1	Sec.
Mechanical Angle	MIN. ±20	°
Mass	8 Approx.	g

【Mechanical Data】

Category Temperature Range	-30~80	°C
Storage Temperature Range	-30~80	°C

■ Handling Instruction

- This product may be influenced from external magnetic field.
- Use this sensor in the place where is protected from ESD.