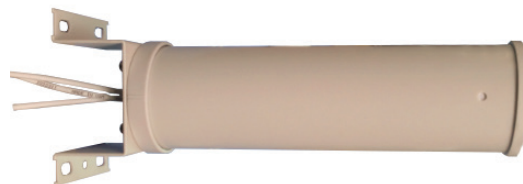


Enclosed Yagi MIMO Antennas for Wi-Fi Applications

PCTEL's 2.4 GHz and 5 GHz Enclosed Yagi MIMO Antennas are suited for long range broadband wireless access applications. They provide highspeed directional Wi-Fi coverage and optimized data throughput in a rugged, low-profile housing. They are ideal for point-to-point installations in challenging environmental settings such as subways, highways, smart grids, oil and gas fields, and wireless backhaul applications.

Features

- 802.11n MIMO performance for optimized data speed and throughput
- Ruggedized UV-stable housing with drain vents for long lasting, reliable performance in severe environmental conditions
- High gain for optimized point-to-point reach and connectivity
- Low-profile design for added installation flexibility
- Includes a robust mast mount bracket designed to withstand maximum 67 m/s wind speed when installed properly
- Well-designed RF performance permits less physical separation on the tower, adding mounting flexibility at installation sites where space is limited



WISP51583MIMO-SH

STANDARD CONFIGURATION

Model	Cable	Connector	Mount
WISP51583MIMO-SH	Three 3.9 in (10 cm) high performance white RG58, plenum rated	N Female	Heavy-duty mast mounting bracket included
WISP24252MIMO-SH	Two 3.9 in (10 cm) high performance white RG58, plenum rated	N Female	

ELECTRICAL SPECIFICATIONS - RF ANTENNA

Model	Frequency Range	Gain	VSWR	Nominal Impedance	Polarization	Port-to-Port Isolation
WISP51583MIMO-SH	5.15-5.85 GHz	14 dBi	< 2.0:1	50 ohms	Vertical, +45°, -45°	Ports P1-P3/P2-P3: -30 dB
WISP24252MIMO-SH	2.40-2.50 GHz	12 dBi	< 2.0:1	50 ohms	Vertical, horizontal	Ports P1-P2: -27 dB

MECHANICAL SPECIFICATIONS

Model	Dimensions
WISP51583MIMO-SH	10.5 L x 3.3 OD (without mount); 12.5 x 3.3 (with mount) in 15.1 L x 3.3 OD (without mount); 17.2 x 3.3 (with mount) in
WISP24252MIMO-SH	

ENVIRONMENTAL SPECIFICATIONS (BOTH MODELS)

Temperature Range	Humidity	Rated Wind
-40°C to +70°C	5-95%	125 mph