

# MIDORI's Linear Potentiometer

## LP-FJ

### Usage Case



#### Case 1

User

A Robot maker

Market

Amusement

Installed

Dinosaur robot

Application

Detecting cylinder stroke

- Control for joint movement

User's Voice



We were looking for linear sensors which can **be bought straight away** because we had to produce Robots within short time. We could get LP-FJ with **short time**. It was really helpful for us.



#### Case 2

User

A Specially equipped vehicle maker

Market

Vehicle Equipment

Installed

Sprinkling vehicle

Application

Detecting cylinder stroke

- Control for valve opening position

User's Voice



The sensor had to be dust and water proof because it would be used outdoor. **LP-FJ has IP65** type. So we have been used this type with no worry.



## Case 3

User

A Material handling maker

Market

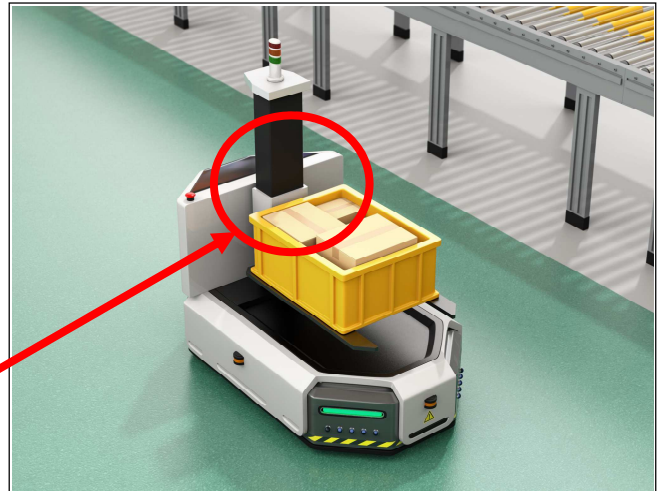
Material handling

Installed

AGV

Application

Detecting of lift up-down  
● Control for lift height



User's Voice



We were looking for a sensor which can be attached to the lift part directly. LP-FJ can measure actuator's movement linearly and it **moves smoothly**.

## Case 4

User

A Molding machine maker

Market

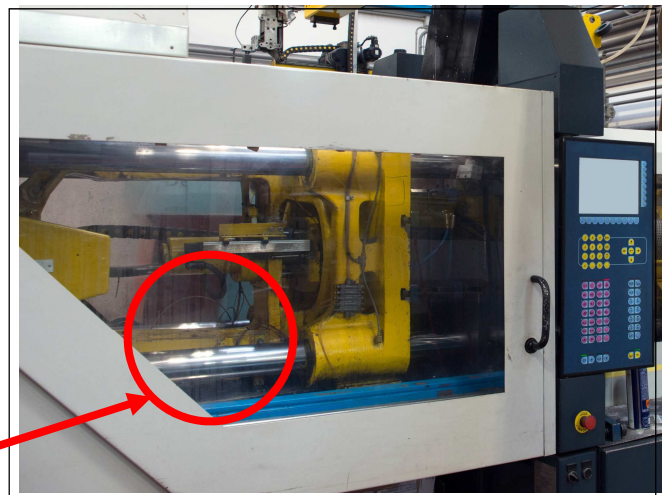
Industrial machinery

Installed

Injection machine

Application

Detecting cylinder stroke  
● Control for position of mold



User's Voice



We were looking for a Linear sensor which can be attached small space in our machine. **Housing diameter of LP-FJ is only 22mm** so we could use it easily.



**MIDORI PRECISIONS**  
[www.midori.co.jp](http://www.midori.co.jp)